



THE LOVE OF HOME

AUTUMN 2023

ROWICO
HOME

THE LOVE OF HOME - catalogue autumn 2023.

An internal production of the marketing team at Rowico Home.

Furniture on the cover: PLAINFIELD dining table, WOLCOTT chair, and HAZELTON glass cabinet. On this page: HAZELTON sideboard.

Reservation for any printing errors. For printing technical reasons, colour deviations may occur. The furniture range varies in different markets.

PRINTING HOUSE: STIBO

All paper comes from responsible sources and has the label FSC-MIX.



Sustainable choice!

Several of our furniture pieces consist of FSC®-certified wood. The FSC-100% label means that all wood in the furniture comes from responsible forestry.



The FSC-MIX label means that all wood in the furniture comes from responsible forestry. In the gallery, at the end of the catalogue, the articles with the labels are marked.

If you are interested to know more, you can read about our certificate at www.info.fsc.org and search for our licence number FSC-C135942.

WELCOME HOME

At Rowico Home, we create furniture in Scandinavian design. Furniture focusing on sustainability, FSC-certified wood, and designs made to be loved for many years.

As a company, it is also important for us to create a team of people who have fun together. Our company and furniture should embody our core values of simplicity, security, and family.

Meeting Rowico Home should feel like coming home. So now, we want to give you a glimpse into our autumn news and welcome you to our home of furniture.

Best regards

Jessica Hammargren

CEO







SCANDINAVIAN DESIGN

The dining table PLAINFIELD is a table with a classic Scandinavian design. Straight lines in the tabletop and cross beams meet the partially rounded legs. The dining table can be extended up to 320 cm with the help of additional extension leaves. The table has solid legs and a semi-solid tabletop with wild oak veneer, meaning it has a 3 mm thick veneer, making it highly durable. In the wild oak veneer, the knots in the wood are preserved so that nothing goes to waste.

Our popular SIERRA chair in beige bouclé is a nice complement to this table. The fabric is available for both the regular chair and the bar chair.

The storage collection HAZELTON has a modern feeling with clean, sleek lines. Solid oak for the legs, oak veneer on all flat surfaces, and sliding glass doors. Both the sideboard and the glass cabinet, which the collection includes, have bases shaped similarly to the PLAINFIELD dining table, so they fit nicely together.





The MADDOCK dining table has a tabletop in veneer oak and metal legs. A lovely table that can be extended with one or two extension leaves, perfect for dinners with many friends. The swivel chair ALISON is very comfortable and, with this setup in your dining area, you can enjoy dinners for several hours.



SMART FUNCTIONS

A round extendable dining table in natural or brown oak with a centrally positioned black metal base is the table MADDOCK. The placement of the base and the option of extension leaves make MADDOCK a highly flexible dining table. The tabletop is treated with RUBIO oil and is semi-solid, meaning it has a 3 mm thick veneer.

Our popular ALISON chair and armchair with a swivel base now in two additional colours: light beige and dark beige. Here, it is seen in light beige. ALISON features a padded seat with high seating comfort in a curved design, and its legs have a 360-degree swivel function. The fabric is highly durable with a Martindale rating of 45 000. The chair is also available in beige, grey, and dark grey.

The AUSTIN bar stool completes your kitchen island. Available in the colours lacquered oak, lacquered black and whitewashed oak.







NATURAL MATERIAL

ROSELAWN is a padded armchair with a 360-degree swiveling metal base. The armchair suits most homes and offers a high level of seating comfort. The fabric is the same as on the standard model of WILLARD: Brenda beige #34.

With a cream-beige coloured stone-like tabletop, created from glossy ceramic, the MARSDEN coffee table exudes a natural feeling. The profiled legs in matte lacquered solid oak meet the wooden edge around the coffee table, creating a delightful contrast. The ceramic material makes the table resistant to liquids and scratches. The coffee table is available in two different colours, brown and whitewash, and two sizes that can be ideally matched together to create the feeling of nesting tables.

The EVERETT collection is expanded with a sideboard and a glass cabinet in brown oak. The brown version of EVERETT matches perfectly with the YUMI collection that offers brown tables, both dining tables and coffee tables. On the left, YUMI round table has been combined with AMI chair.



TRENDY AUTUMN

The coffee tables DEERFIELD have a modern design and are available in two different colours and two sizes. The different sizes allow you to create the feeling of nesting tables.

The table is designed with a lined pattern of assembled lacquered solid oak in a semi-solid material, along with a solid edge that frames the table. The tables get an airy feeling with the base made of black metal.

Here you can see DEERFIELD together with our modular sofa WILLARD. To the right a three-seater sofa in a red fabric called Rain (#20), a very trendy colour this autumn together with the brown version of DEERFIELD. Below WILLARD has a white bouclé fabric called Alice (#101). We love the combination with the red-orange details in the interior.

The WILLARD modular sofa is a flexible sofa where you choose between a number of different fabrics and modules to get the sofa you want.



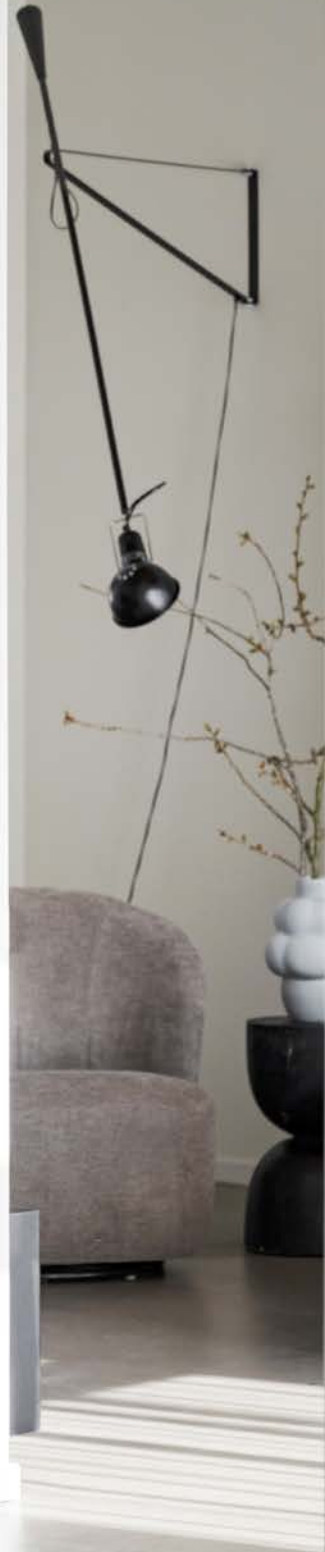


Our modular sofas, WILLARD and DUNCAN, can be built according to your wishes. In the catalogue we only present our standard versions. If you want a different composition or to choose another fabric and colour please visit a retailer or our website.





The design team at Rowico Home got inspired by traditional Scandinavian design combined with a modern twist and created HAZELTON. A sideboard in oak with sliding glass doors. Place your favourite interior items and let the sideboard together with lovely things be an eye-catcher in your home.





WE LOVE OAK

The WOLCOTT chair has a timeless design where straight lines meet round shapes. The external designer Johannes Lif has designed the chair and it has a simple design but yet is a confident chair that fits in many different homes. The legs of the chair are made of solid oak and the frame, backrest and seat of oak veneer. The seat is upholstered with a blend of recycled leather and textile.

The dining table PLAINFIELD in natural wild oak veneer is a perfect match to the WOLCOTT chair. The dining tables are 220 cm and with two additional extension leaves the table can become 320 cm.

The HAZELTON glass cabinet also fits nicely with WOLCOTT and PLAINFIELD. Natural oak colour grows stronger this autumn and it infuses the home with a warmth that appeals many people.



COSY AND COMFORTABLE

The round coffee table BOXFORD is a slightly larger coffee table that complements a lounge sofa like RAWLINS. The strong design language, where the thick tabletop meets the sturdy cross base, creates a rustic feeling. The coffee table is available in black and brown.

HALIFAX sideboard in brown or black lacquered oak with black metal legs matches the BOXFORD coffee tables nicely.

The sofa RAWLINS offers a very cosy, soft and lovely seating comfort. Available in two sizes to fit most homes.

The standard version of the sofa (fabric Bobby #2) will be in stock and can be delivered immediately. RAWLINS will also be available to order in all our fabric options for sofas, then with a delivery time of 8-10 weeks.

For the sofa, you can also buy a footstool in the same series.





If you want to order RAWLINS in a different fabric or colour you can visit a retailer or our website for more information.



ROOM FOR THE WHOLE FAMILY

GLENSIDE is a sleek round dining table where straight lines in the legs meet the round tabletop. An extendable table in natural or brown oak with solid wood legs. It has a basic round shape but can be complemented with two extension leaves and then becomes oval shaped and creates room for the whole family. The tabletop is treated with RUBIO oil and is semi-solid, which makes it highly durable.

On the left you can see the wooden chair WATERTON in oak together with GLENSIDE in oak. That chair has a similar design and fits nicely with the dining table. Both the chair and the table have the same shape of legs and the round backrest creates a nice overall look with the round table.

Here you also can see the brown table with the ALISON chair and armchair in dark beige. This lovely combination offers great comfort.





COMFORTABLE AND STYLISH

We are now releasing two brown dining tables as part of the TYLER collection. TYLER is a Scandinavian dining table made of 100% FSC-certified solid oak. The table is in a brown RUBIO-oiled finish, with the tabletop crafted from finger-jointed solid European oak and the legs made of solid oak in full lengths. The table comes with one extension leaf, allowing you to easily extend your table, and an additional extension leaf can also be purchased.

Here you can see the table with the AMESBURY chair that is available in a selected light beige fabric and with three options for the solid oak base: brown oak, whitewash oak, and oak. The seat cushion is upholstered in polyurethane foam and polyester fabric, and it is detachable and secured with velcro straps. The fabric has a softness and a chenille-like feel and offers a high level of seating comfort.

The rounded legs in both the TYLER dining table and AMESBURY chair create a fantastic symbiosis in the design.







EVERYTHING FOR YOUR HOME

To the left we present a dining area with the CARRADALE table and AMI chair in oak. CARRADALE is a collection where we are adding smaller round dining tables in all colours: oiled oak, whitewash oiled oak, oiled brown oak, and black lacquered oak. CARRADALE features a two-part solid oak tabletop with a brushed surface, resting on modern V-shaped legs.

In the hallway we present the HILLMOND collection in lacquered oak. Includes seven pieces, primarily designed for the hallway, but selected pieces also work well in a room such as a bedroom. Straight, timeless design with carved recesses as a detail.

The headboard WHITMORE in natural veneer oak with matching bedside tables and a white marble surface gives the bedroom a cosy feeling.

The wooden bedside tables can also be purchased separately and mounted directly on the wall.

All furniture on these two pages also is available in whitewash.

POPULAR YEAR AFTER YEAR

The FILIPPA sideboards and glass cabinet are now available in brown lacquered oak. With a sleek design and generous storage space they are very popular in many homes. The legs are slightly flared, giving them a modern expression. These storage pieces are part of our extensive FILIPPA collection, which also includes several matching dining tables in various sizes, to the right you can see the round version together with the ALISON chair.

Below we present the FILIPPA drop-leaf table in brown lacquered solid oak together with the SIERRA chair. The table is 120 cm long and has a drop-leaf that makes room for more guests. The dining table is suitable for those who want to invite family and friends over but don't have the space for a large dining table. This drop-leaf table is also available in the size 80 cm and several colours.

To complete your dining area we offer AUCKLAND carpets. The carpet consists of 100% wool and is warm and comfortable to walk on. The AUCKLAND carpets are hand woven and of high quality. They are available in several sizes and thanks to their natural colours they are easy to place in different rooms.





INTERIOR DESIGN TRENDS

For our latest collection we have enlisted the help of the interior designer Ulrika Sjö Wiberg. She has added autumn trends along with our latest autumn furniture news.



WHAT IS IMPORTANT IN INTERIOR DESIGN FOR AUTUMN 2023?

This autumn we're seeing warm, cosy, and natural elements that create a welcoming and relaxing atmosphere. Sustainability is important for many consumers, and this trend is reflected in the use of sustainable materials in interior design. Expect to see an increase in the use of natural materials such as wood, stone, and recycled materials.

Earthy, darker tones are making a comeback this season, with warm hues such as rust, ochre, and terracotta taking centre stage. These colours add warmth and depth to any space and pair well with natural materials.

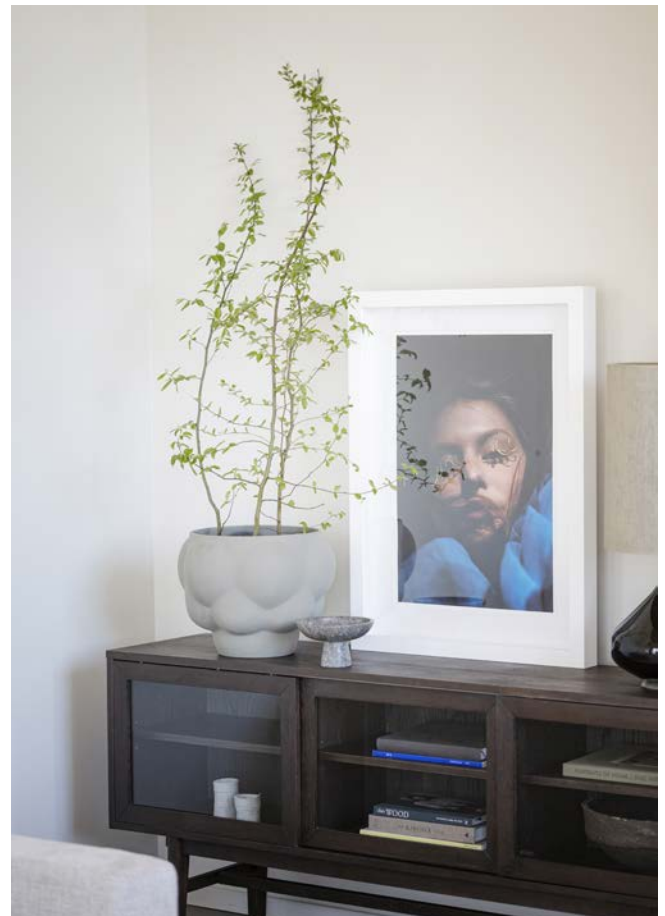
Soft, curved shapes are becoming very popular. This trend is all about creating a sense of comfort and relaxation in your home, with pieces that invite you to sit and stay awhile.

Bringing the outdoors inside, with the use of natural elements such as plants, water features, and natural light is really a trend. Perfect for creating a calming and rejuvenating space that connects you with nature.

Bold prints and patterns are making a comeback this season, with a focus on geometric shapes and bold colour combinations. These elements can be incorporated into everything from wallpaper and textiles to artwork and accessories.

SUMMARY

In summary, the autumn of 2023 is all about creating a warm, welcoming and sustainable base and adding colour and nature. This will give you an inviting feeling that will increase the love for your home.



**BRIGHAM DINING TABLE**119400 Whitewash/black
L 220 W 90 H 75

Steel brushed wild oak veneer on particle board, solid oak in edges all around. Powder coated metal legs.

Assembled: No
Insert: Possible to buy 2, 119404
Max length: 320 cm**BRIGHAM DINING TABLE**119401 Brown/black
L 220 W 90 H 75

Steel brushed wild oak veneer on particle board, solid oak in edges all around. Powder coated metal legs.

Assembled: No
Insert: Possible to buy 2, 119406
Max length: 320 cm**BROCKTON DINING TABLE**118441 Whitewash
L 80 W 100 H 75

Top in MDF with oak veneer, with solid oak edges. Solid oak in legs and all construction parts.

Assembled: No
Insert: Included 2 leaves
Max length: 220 cm**BROOKLYN DINING TABLE**108534 Oak
L 170 W 95 H 75

Lacquered, finger jointed solid oak with light brushed finish.

Assembled: No
Insert: Possible to buy 2, 108594
Max length: 270 cm
FSC: FSC 100%**BROOKLYN DINING TABLE**108535 Dark brown
L 170 W 95 H 75

Lacquered, finger jointed solid oak with brushed dark brown finish.

Assembled: No
Insert: Possible to buy 2, 108543
Max length: 270 cm
FSC: FSC 100%**BROOKLYN DINING TABLE**108536 Whitewash
L 170 W 95 H 75

Oiled, finger jointed solid oak with whitewash finish.

Assembled: No
Insert: Possible to buy 2, 108563
Max length: 270 cm
FSC: FSC 100%**BROOKLYN DINING TABLE**108541 Dark brown
L 220 W 95 H 75

Lacquered, finger jointed solid oak with brushed dark brown finish.

Assembled: No
Insert: Possible to buy 2, 108543
Max length: 320 cm
FSC: FSC 100%**BROOKLYN DINING TABLE**108561 Whitewash
L 220 W 95 H 75

Oiled, finger jointed solid oak with whitewash finish.

Assembled: No
Insert: Possible to buy 2, 108563
Max length: 320 cm
FSC: FSC 100%**BROOKLYN DINING TABLE**108590 Oak
L 220 W 95 H 75

Lacquered, finger jointed solid oak with brushed finish.

Assembled: No
Insert: Possible to buy 2, 108594
Max length: 320 cm
FSC: FSC 100%**BROOKLYN DINING TABLE**119820 Dark brown/black
L 220 W 95 H 75

Lacquered, finger jointed solid oak with brushed dark brown finish. Legs in powder coated metal in sand structure.

Assembled: No
Insert: Possible to buy 2, 108543
Max length: 320 cm
FSC: FSC 100%**BROOKLYN DINING TABLE**119821 Whitewash/black
L 220 W 95 H 75

Oiled, finger jointed solid oak with whitewash finish. Legs in powder coated metal in sand structure.

Assembled: No
Insert: Possible to buy 2, 108563
Max length: 320 cm
FSC: FSC 100%**BROOKLYN DINING TABLE**119822 Oak/black
L 220 W 95 H 75

Lacquered, finger jointed solid oak with brushed finish. Legs in powder coated metal in sand structure.

Assembled: No
Insert: Possible to buy 2, 108594
Max length: 320 cm
FSC: FSC 100%**BROOKLYN DINING TABLE**119824 Dark brown/black
L 220 W 95 H 75

Lacquered, finger jointed solid oak with brushed dark brown finish. Legs in powder coated metal in sand structure.

Assembled: No
Insert: Possible to buy 2, 108543
Max length: 320 cm
FSC: FSC 100%**BROOKLYN DINING TABLE**119825 Whitewash/black
L 220 W 95 H 75

Oiled, finger jointed solid oak with whitewash finish. Legs in powder coated metal in sand structure.

Assembled: No
Insert: Possible to buy 2, 108563
Max length: 320 cm
FSC: FSC 100%**BROOKLYN DINING TABLE**119826 Oak/black
L 220 W 95 H 75

Lacquered, finger jointed solid oak with brushed finish. Legs in powder coated metal in sand structure.

Assembled: No
Insert: Possible to buy 2, 108594
Max length: 320 cm
FSC: FSC 100%**BROOKLYN DINING TABLE**119834 Dark brown/black
L 170 W 95 H 75

Lacquered, finger jointed solid oak with brushed dark brown finish. Legs in powder coated metal in sand structure.

Assembled: No
Insert: Possible to buy 2, 108543
Max length: 270 cm
FSC: FSC 100%



BROOKLYN DINING TABLE

119835 Whitewash/black
L 170 W 95 H 75

Oiled, finger jointed solid oak with whitewash finish.
Legs in powder coated metal in sand structure.

Assembled: No
Insert: Possible to buy 2, 108563
Max length: 270 cm
FSC: FSC 100%



BROOKLYN DINING TABLE

119836 Oak/black
L 170 W 95 H 75

Lacquered, finger jointed solid oak with brushed finish. Legs in powder coated metal in sand structure.

Assembled: No
Insert: Possible to buy 2, 108594
Max length: 270 cm
FSC: FSC 100%



BROOKLYN DINING TABLE

119837 Dark brown/black
L 170 W 95 H 75

Lacquered, finger jointed solid oak with brushed dark brown finish. Legs in powder coated metal in sand structure.

Assembled: No
Insert: Possible to buy 2, 108543
Max length: 270 cm
FSC: FSC 100%



BROOKLYN DINING TABLE

119838 Whitewash/black
L 170 W 95 H 75

Oiled, finger jointed solid oak with white wash finish. Legs in powder coated metal in sand structure.

Assembled: No
Insert: Possible to buy 2, 108563
Max length: 270 cm
FSC: FSC 100%



BROOKLYN DINING TABLE

119839 Oak/black
L 170 W 95 H 75

Lacquered, finger jointed solid oak with brushed finish. Legs in powder coated metal in sand structure.

Assembled: No
Insert: Possible to buy 2, 108594
Max length: 270 cm
FSC: FSC 100%



CALVERTON DINING TABLE

120650 Brown
L 230 W 95 H 75

Solid oak in legs, top in MDF with oak veneer.

Assembled: No
Insert: Possible to buy 2, 120651
Max length: 320 cm



CALVERTON DINING TABLE

120652 Brown
L 120 W 120 H 75

Solid oak in legs, top in MDF with oak veneer.

Assembled: No
Insert: Not available
Max length: 120 cm



CALVERTON DINING TABLE

120658 Black
L 120 W 120 H 75

Solid oak in legs, top in MDF with oak veneer.

Assembled: No
Insert: Not available
Max length: 120 cm





CARRDALE DINING TABLE
120320 Whitewash/black
L 220 W 100 H 75

Solid finger jointed whitewashed RUBIO-oiled oak, powder coated metal in sand structure.

Assembled: No
Insert: Possible to buy 2, 120316
Max length: 320 cm
FSC: FSC 100%



CARRDALE DINING TABLE
120321 Brown/black
L 220 W 100 H 75

Solid finger jointed brown RUBIO-oiled oak, powder coated metal in sand structure.

Assembled: No
Insert: Possible to buy 2, 120318
Max length: 320 cm
FSC: FSC 100%



CARRDALE DINING TABLE
120326 Black
L 220 W 100 H 75

Solid finger jointed black lacquered oak, powder coated metal in sand structure.

Assembled: No
Insert: Possible to buy 2, 120317
Max length: 320 cm
FSC: FSC 100%



CARRDALE DINING TABLE
120895 Oak/black
L 220 W 100 H 75

Solid finger jointed RUBIO-oiled oak, powder coated metal in sand structure.

Assembled: No
Insert: Possible to buy 2, 120319
Max length: 320 cm
FSC: FSC 100%



CARRDALE DINING TABLE
121215 Whitewash/black
L 130 W 130 H 75

Solid finger jointed whitewashed RUBIO-oiled oak, powder coated metal in sand structure.

Assembled: No
Insert: Not available
Max length: 130 cm
FSC: FSC 100%



CARRDALE DINING TABLE
121216 Brown/black
L 130 W 130 H 75

Solid finger jointed brown RUBIO-oiled oak, powder coated metal in sand structure.

Assembled: No
Insert: Not available
Max length: 130 cm
FSC: FSC 100%



CARRDALE DINING TABLE
121217 Black
L 130 W 130 H 75

Solid finger jointed black lacquered oak, powder coated metal in sand structure.

Assembled: No
Insert: Not available
Max length: 130 cm
FSC: FSC 100%



CARRDALE DINING TABLE
121218 Oak/black
L 130 W 130 H 75

Solid finger jointed RUBIO-oiled oak, powder coated metal in sand structure.

Assembled: No
Insert: Not available
Max length: 130 cm
FSC: FSC 100%



CARRDALE DINING TABLE
120322 Whitewash/black
L 150 W 150 H 75

Solid finger jointed whitewashed RUBIO-oiled oak, powder coated metal in sand structure.

Assembled: No
Insert: Not available
Max length: 150 cm
FSC: FSC 100%



CARRDALE DINING TABLE
120323 Brown/black
L 150 W 150 H 75

Solid finger jointed brown RUBIO-oiled oak, powder coated metal in sand structure.

Assembled: No
Insert: Not available
Max length: 150 cm
FSC: FSC 100%



CARRDALE DINING TABLE
120328 Black
L 150 L 150 H 75

Solid finger jointed black lacquered oak, powder coated metal in sand structure.

Assembled: No
Insert: Not available
Max length: 150 cm
FSC: FSC 100%



CARRDALE DINING TABLE
120896 Oak/black
L 150 W 150 H 75

Solid finger jointed RUBIO-oiled oak, powder coated metal in sand structure.

Assembled: No
Insert: Not available
Max length: 150 cm
FSC: FSC 100%



CARRDALE DINING TABLE
120327 Black
L 220 W 100 H 75

Solid finger jointed black lacquered oak, powder coated metal in sand structure.

Assembled: No
Insert: Possible to buy 2, 120317
Max length: 320 cm
FSC: FSC 100%



CARRDALE DINING TABLE
120340 Whitewash/black
L 220 W 100 H 75

Solid finger jointed whitewashed RUBIO-oiled oak, powder coated metal in sand structure.

Assembled: No
Insert: Possible to buy 2, 120316
Max length: 320 cm
FSC: FSC 100%



CARRDALE DINING TABLE
120341 Brown/black
L 220 W 100 H 75

Solid finger jointed brown RUBIO-oiled oak, powder coated metal in sand structure.

Assembled: No
Insert: Possible to buy 2, 120318
Max length: 320 cm
FSC: FSC 100%



CARRDALE DINING TABLE
120897 Oak/black
L 220 W 100 H 75

Solid finger jointed RUBIO-oiled oak, powder coated metal in sand structure.

Assembled: No
Insert: Possible to buy 2, 120319
Max length: 320 cm
FSC: FSC 100%



CARRADALE DINING TABLE
120329 Black
L 150 W 150 H 75

Solid finger jointed black lacquered oak, powder coated metal in sand structure.

Assembled: No
Insert: Not available
Max length: 150 cm
FSC: FSC 100%



CARRADALE DINING TABLE
120342 Whitewash/black
L 150 W 150 H 75

Solid finger jointed whitewashed RUBIO-oiled oak, powder coated metal in sand structure.

Assembled: No
Insert: Not available
Max length: 150 cm
FSC: FSC 100%



CARRADALE DINING TABLE
120343 Brown/black
L 150 W 150 H 75

Solid finger jointed RUBIO-oiled, powder coated metal in sand structure.

Assembled: No
Insert: Not available
Max length: 150 cm
FSC: FSC 100%



CARRADALE DINING TABLE
120898 Oak/black
L 150 W 150 H 75

Solid finger jointed RUBIO-oiled oak, powder coated metal in sand structure.

Assembled: No
Insert: Not available
Max length: 150 cm
FSC: FSC 100%



CARRADALE DINING TABLE
120880 Whitewash/black
L 170 W 100 H 75

Solid finger jointed RUBIO-oiled oak, powder coated metal in sand structure.

Assembled: No
Insert: Possible to buy 2, 120316
Max length: 270 cm
FSC: FSC 100%



CARRADALE DINING TABLE
120881 Brown/black
L 170 W 100 H 75

Solid finger jointed RUBIO-oiled oak, powder coated metal in sand structure.

Assembled: No
Insert: Possible to buy 2, 120318
Max length: 270 cm
FSC: FSC 100%



CARRADALE DINING TABLE
120882 Black
L 170 W 100 H 75

Solid finger jointed lacquered oak, powder coated metal in sand structure.

Assembled: No
Insert: Possible to buy 2, 120317
Max length: 270 cm
FSC: FSC 100%



CARRADALE DINING TABLE
120883 Oak/black
L 170 W 100 H 75

Solid finger jointed RUBIO-oiled oak, powder coated metal in sand structure.

Assembled: No
Insert: Possible to buy 2, 120319
Max length: 270 cm
FSC: FSC 100%



CARRADALE DINING TABLE
120884 Whitewash/black
L 170 W 100 H 75

Solid finger jointed RUBIO-oiled oak, powder coated metal in sand structure.

Assembled: No
Insert: Possible to buy 2, 120316
Max length: 270 cm
FSC: FSC 100%



CARRADALE DINING TABLE
120885 Brown/black
L 170 W 100 H 75

Solid finger jointed RUBIO-oiled oak, powder coated metal in sand structure.

Assembled: No
Insert: Possible to buy 2, 120318
Max length: 270 cm
FSC: FSC 100%



CARRADALE DINING TABLE
120886 Black
L 170 W 100 H 75

Solid finger jointed lacquered oak, powder coated metal in sand structure.

Assembled: No
Insert: Possible to buy 2, 120317
Max length: 270 cm
FSC: FSC 100%



CARRADALE DINING TABLE
120887 Oak/black
L 170 W 100 H 75

Solid finger jointed RUBIO-oiled oak, powder coated metal in sand structure.

Assembled: No
Insert: Possible to buy 2, 120319
Max length: 270 cm
FSC: FSC 100%



CIRRUS DINING TABLE
114131 Oak
L 190 W 90 H 75

Veneered top and solid legs in lacquered oak.

Assembled: No
Insert: Included 1
Max length: 235 cm



CIRRUS DINING TABLE
114141 Oak
L 150 W 90 H 75

Veneered top and solid legs in lacquered oak.

Assembled: No
Insert: Included 1
Max length: 195 cm



COLONSAY DINING TABLE
119986 Oak
L 215 W 96 H 75

Oak veneer on particle board, solid oak edges. Solid oak in legs and frame. Lacquered finish

Assembled: No
Insert: Possible to buy 2, 119987
Max length: 315 cm



COLTON DINING TABLE
119895 Black
L 135 W 135 H 75

Top in MDF with ash veneer, legs in powder coated metal, in sandstructure.

Assembled: No
Insert: Not available
Max length: 135



DAWSON DINING TABLE

118843 Grey/whitewash
L 200 W 90 H 75

High pressure laminate top surface, MDF core, oak veneer edge. Solid oak frame and legs. White wash lacquered finish.

Assembled: No

Insert: Included 1, possible to buy 1, 118844
Max length: 290 cm



DAWSON DINING TABLE

119300 Whitewash
L 160 W 105 H 75

Oak veneer on MDF, oak veneer edge. Lacquered. Solid oak in frame and legs.

Assembled: No

Insert: Included 1, can buy 1, 119301
Max length: 250 cm



DAWSON DINING TABLE

119303 Whitewash
L 200 W 90 H 75

Oak veneer top on MDF, oak veneer edge. Solid oak frame and legs.

Assembled: No

Insert: Included 1, can buy 1, 119304
Max length: 290 cm



EMMETT DINING TABLE

120350 Whitewash
L 240 W 95 H 75

Solid finger jointed European RUBIO-oiled oak in the whole table.

Assembled: No

Insert: Not available
Max length: 240 cm
FSC: FSC 100%



EMMETT DINING TABLE

120352 Brown
L 240 W 95 H 75

Solid finger jointed European RUBIO-oiled oak in the whole table.

Assembled: No

Insert: Not available
Max length: 240 cm
FSC: FSC 100%



EMMETT DINING TABLE

120354 Black
L 240 W 95 H 75

Solid finger jointed European black lacquered ash in the whole table.

Assembled: No

Insert: Not available
Max length: 240 cm
FSC: FSC 100%



EMMETT DINING TABLE

120356 Oak
L 240 W 95 H 75

Solid finger jointed European RUBIO-oiled oak in the whole table.

Assembled: No

Insert: Not available
Max length: 240 cm
FSC: FSC 100%



EVERETT DINING TABLE

118764 Whitewash/black
L 180 W 100 H 75

Solid oak, full lamellas. Steel brushed surface, white wash finish with lacquer. Legs in black powder coated metal in sand structure.

Assembled: No

Max length: 280 cm
Insert: Possible to buy 2, 118766
FSC: FSC 100%



EVERETT DINING TABLE

118765 Whitewash/black
L 220 W 100 H 75

Solid oak, full lamellas. Steel brushed surface, white wash finish with lacquer. Legs in black powder coated metal in sand structure.

Assembled: No

Max length: 320 cm
Insert: Possible to buy 2, 118766
FSC: FSC 100%



EVERETT DINING TABLE

118779 Black
L 180 W 100 H 75

Solid ash, full lamellas. Steel brushed surface, black lacquered finish. Legs in black powder coated metal in sand structure.

Assembled: No

Max length: 280 cm
Insert: Possible to buy 2, 118781
FSC: FSC 100%



EVERETT DINING TABLE

118780 Black
L 220 W 100 H 75

Solid ash, full lamellas. Steel brushed surface, black lacquered finish. Legs in black powder coated metal in sand structure.

Assembled: No

Max length: 320 cm
Insert: Possible to buy 2, 118781
FSC: FSC 100%



FENWOOD DINING TABLE

118600 Black
L 180 W 90 H 75

Ash veneer on MDF, apron, legs in solid rubberwood, black lacquered. Gold colored metal feet. 2 inserts in ash veneer included.

Assembled: No

Insert: Included 2
Max length: 260 cm



FILIPPA DINING TABLE

113720 Oak
L 180 W 90 H 74

Finger-jointed, oiled solid oak.

Assembled: No

Insert: Possible to buy 2, 113726
Max length: 280 cm
FSC: FSC 100%



FILIPPA DINING TABLE

113727 Dark brown
L 180 W 90 H 74

Finger-jointed, lacquered and steel brushed solid oak.

Assembled: No

Insert: Possible to buy 2, 113735
Max length: 280 cm
FSC: FSC 100%



FILIPPA DINING TABLE

113729 Whitewash
L 180 W 90 H 74

Finger-jointed, oiled, whitewashed solid oak.

Assembled: No

Insert: Possible to buy 2, 113734
Max length: 280 cm
FSC: FSC 100%



FILIPPA DINING TABLE

113722 Oak
L 140 W 90 H 74

Finger-jointed, oiled solid oak.

Assembled: No

Insert: Possible to buy 2, 113726
Max length: 240 cm
FSC: FSC 100%



FILIPPA DINING TABLE

113837 Dark brown
L 140 W 90 H 74

Finger-jointed, lacquered and steel brushed solid oak.

Assembled: No
Insert: Possible to buy 2, 113735
Max length: 240 cm
FSC: FSC 100%



FILIPPA DINING TABLE

113731 Whitewash
L 140 W 90 H 74

Finger-jointed, oiled, whitewashed solid oak.

Assembled: No
Insert: Possible to buy 2, 113734
Max length: 240 cm
FSC: FSC 100%



FILIPPA DINING TABLE

113756 Whitewash
L 120 W 120 H 75

Finger-jointed, oiled, whitewashed solid oak.

Assembled: No
Insert: Included 1, possible to buy 1, 113757
Max length: 210 cm
FSC: FSC 100%



FILIPPA DINING TABLE

113830 Dark brown
L 120 W 120 H 75

Finger-jointed, lacquered, brown solid oak.

Assembled: No
Insert: Included 1, possible to buy 1, 113831
Max length: 210 cm
FSC: FSC 100%



FILIPPA DINING TABLE

117625 Oak
L 170 W 105 H 74

Finger-jointed, oiled solid oak.

Assembled: No
Insert: Included 1, possible to buy 1, 117626
Max length: 250 cm
FSC: FSC 100%



FILIPPA DINING TABLE

117629 Whitewash
L 170 W 105 H 74

Finger-jointed, oiled, whitewashed solid oak.

Assembled: No
Insert: Included 1, possible to buy 1, 117630
Max length: 250 cm
FSC: FSC 100%



FILIPPA DROP LEAF TABLE

113751 Oak
L 80 W 80 H 74

Finger-jointed, oiled solid oak.

Assembled: No
Insert: Included 1 leaf
Max length: 125 cm
FSC: FSC 100%



FILIPPA DROP LEAF TABLE

113839 Dark brown
L 80 W 80 H 74

Finger-jointed, lacquered, brown solid oak.

Assembled: No
Insert: Included 1 leaf
Max length: 125 cm
FSC: FSC 100%



FILIPPA DROP LEAF TABLE

113718 Whitewash
L 80 W 80 H 74

Finger-jointed, oiled, whitewashed solid oak.

Assembled: No
Insert: Included 1 leaf
Max length: 125 cm
FSC: FSC 100%



FILIPPA DROP LEAF TABLE

113724 Oak
L 120 W 80 H 74

Finger-jointed, oiled solid oak.

Assembled: No
Insert: Included 1 leaf
Max length: 165 cm
FSC: FSC 100%



FILIPPA DROP LEAF TABLE

113838 Dark brown
L 120 W 80 H 74

Finger-jointed, lacquered, brown solid oak.

Assembled: No
Insert: Included 1 leaf
Max length: 165 cm
FSC: FSC 100%



FILIPPA DROP LEAF TABLE

113733 Whitewash
L 120 W 80 H 74

Finger-jointed, oiled, whitewashed solid oak.

Assembled: No
Insert: Included 1 leaf
Max length: 165 cm
FSC: FSC 100%



FRED DINING TABLE

117420 Whitewash/black
L 240 W 100 H 75

Solid finger jointed oak in white wash lacquer.
Steel brushed surface on top. Legs in black powder coated metal.

Assembled: No
Insert: Not available
Max length: 240 cm
FSC: FSC 100%



FRED DINING TABLE

117422 Whitewash/black
L 170 W 95 H 75

Solid finger jointed oak in white wash lacquer.
Steel brushed surface on top. Legs in black powder coated metal.

Assembled: No
Insert: Not available
Max length: 170 cm
FSC: FSC 100%



FRED DINING TABLE

117430 Dark brown/black
L 240 W 100 H 75

Solid finger jointed oak in dark brown lacquer.
Steel brushed surface on top. Legs in black powder coated metal.

Assembled: No
Insert: Not available
Max length: 240 cm
FSC: FSC 100%



FRED DINING TABLE

117432 Dark brown/black
L 170 W 95 H 75

Solid finger jointed oak in dark brown lacquer.
Steel brushed surface on top. Legs in black powder coated metal.

Assembled: No
Insert: Not available
Max length: 170 cm
FSC: FSC 100%

**FRED DINING TABLE**117440 Dark brown/black
L 160 W 160 H 75Solid finger jointed oak in dark brown lacquer.
Steel brushed surface on top. Legs in black powder
coated metal.Assembled: No
Insert: Not available
Max length: 160 cm
FSC: FSC 100%**FRED DINING TABLE**117442 Whitewash/black
L 160 W 160 H 75Solid finger jointed oak in white wash lacquer.
Steel brushed surface on top. Legs in black powder
coated metal.Assembled: No
Insert: Not available
Max length: 160 cm
FSC: FSC 100%**FRED DINING TABLE**117444 Black
L 160 W 160 H 75Solid finger jointed ash in black lacquer. Steel
brushed surface on top. Legs in black powder
coated metal.Assembled: No
Insert: Not available
Max length: 160 cm
FSC: FSC 100%**GLENSIDE DINING TABLE**121140 Oak
L 130 W 130 H 75Solid oak in legs and apron, particle board with oak
veneer in top. Treated with RUBIO-oil. Extensionrails
in metal, for 2 inserts.Assembled: No
Insert: Possible to buy 2, 121141
Max length: 230 cm**GLENSIDE DINING TABLE**121144 Brown
L 130 W 130 H 75Solid oak in legs and apron, particle board with oak
veneer in top. Treated with RUBIO-oil. Extensionrails
in metal, for 2 inserts.Assembled: No
Insert: Possible to buy 2, 121145
Max length: 230 cm**JENSON BAR TABLE**119340 Whitewash
L 122 W 75 H 90Oak veneer on MDF, solid oak edges. Solid oak
legs and frame.Assembled: No
Insert: Not available
Max length: 122 cm**LOTTA BAR TABLE**110710 Black
L 90 W 90 H 91Top in MDF with ash veneer, legs, struts and apron
in solid rubberwood (Hevea).Assembled: No
Insert: Not available
Max length: 90 cm**LOTTA DINING TABLE**110646 White
L 106 W 106 H 75Top in lacquered MDF, legs in lacquered solid
rubberwood.Assembled: No
Insert: Not available
Max length: 106 cm**LOTTA DINING TABLE**110669 Black
L 106 W 106 H 75Top in lacquered MDF with ash veneer, legs in
lacquered solid rubberwood.Assembled: No
Insert: Not available
Max length: 106 cm**LOTTA DINING TABLE**110735 Black
L 180 W 90 H 75Top in MDF with ash veneer, lacquered. Legs and
apron in solid rubberwood (Hevea), lacquered.Assembled: No
Insert: Not available
Max length: 180 cm**LOTTA DINING TABLE**110742 Black
L 140 W 90 H 75Top in MDF with ash veneer, lacquered. Legs and
apron in solid rubberwood (Hevea), lacquered.Assembled: No
Insert: Not available
Max length: 140 cm**LOTTA DROP LEAF TABLE**110647 White
L 80 W 80 H 75Top in lacquered MDF, legs in lacquered solid
rubberwood.Assembled: No
Insert: Included 1 leaf
Max length: 105 cm**LOTTA DROP LEAF TABLE**110649 White
L 120 W 80 H 75Top in lacquered MDF, legs in lacquered solid
rubberwood.Assembled: No
Insert: Included 1 leaf
Max length: 160 cm**MADDOCK DINING TABLE**121126 Oak/black
L 135 W 135 H 75Oak veneer on particle board, extensionrails in
metal (space for 2 inserts). Treated with RUBIO oil.
Metal legs in powder coat with sand structure.Assembled: No
Insert: Possible to buy 2, 121130
Max length: 235 cm
FSC: FSC 100%**MADDOCK DINING TABLE**121127 Brown/black
L 135 W 135 H 75Oak veneer on particle board, extensionrails in
metal (space for 2 inserts). Treated with RUBIO oil.
Metal legs in powder coat with sand structure.Assembled: No
Insert: Possible to buy 2, 121131
Max length: 235 cm
FSC: FSC 100%**MELFORT DINING TABLE**119745 Oak
L 180 W 90 H 75Top in 25mm MDF with brushed wild oak veneer,
solid oak in edges. Apron and legs in solid birch
with wild oak veneer.Assembled: No
Insert: Possible to buy 2, 119746
Max length: 280 cm



MELVILLE DINING TABLE

119370 Whitewash/black
L 210 W 95 H 75

Wild oak veneer on particle board, solid oak edges.
Lacquered surface. Legs in powder coated metal.

Assembled: No

Insert: Possible to buy 2, 119371

Max length: 310 cm



MELVILLE DINING TABLE

119374 Brown/black
L 210 W 95 H 75

Wild oak veneer on particle board, solid oak edges.
Lacquered surface. Legs in powder coated metal.

Assembled: No

Insert: Possible to buy 2, 119375

Max length: 310 cm



NAGANO DINING TABLE

120076 Brown
L 205 W 95 H 75

Solid oak in legs and apron. MDF with oak veneer
on top.

Assembled: No

Insert: Possible to buy 2, 120077

Max length: 305 cm



NEVIS DINING TABLE

119644 Whitewash
L 220 W 90 H 75

A dining table with lightly exposed legs and veneered
table top. The legs are massive and the table can be
extended on both sides with extension boards.

Assembled: No

Insert: Possible to buy 2, 119645

Max length: 310 cm



PLAINFIELD DINING TABLE

121182 Oak
L 220 W 100 H 75

Solid oak in legs, particle board with oak veneer in
top. Treated with RUBIO oil.

Assembled: No

Insert: Possible to buy 2, 121183

Max length: 320 cm

FSC: FSC 100%



PLAINFIELD DINING TABLE

121184 Brown
L 220 W 100 H 75

Solid oak in legs, particle board with oak veneer in
top. Treated with RUBIO oil.

Assembled: No

Insert: Possible to buy 2, 121185

Max length: 320 cm

FSC: FSC 100%



SKYE DINING TABLE

119325 Black
L 126 W 126 H 76

Top in steel brushed oak veneer on particle board,
legs in black sand structured powder coating.

Assembled: No

Insert: Not available

Max length: 126 cm



SPRINGDALE DINING TABLE

119730 Black
L 200 W 98 H 75

Top in MDF with black painted edge, ceramic top
surface. Legs in powder coated metal.

Assembled: No

Insert: Not available

Max length: 200 cm



TARANSAY DINING TABLE

120830 Beige/whitewash
L 125 W 125 H 75

Solid italian Travertine stone in top, legs and frame
in solid lacquered oak, full lamellas.

Assembled: No

Insert: Not available

Max length: 125 cm

FSC: FSC 100%



TARANSAY DINING TABLE

120831 Beige/brown
L 125 W 125 H 75

Solid italian Travertine stone in top, legs and frame
in solid lacquered oak, full lamellas.

Assembled: No

Insert: Not available

Max length: 125 cm

FSC: FSC 100%



TARANSAY DINING TABLE

120862 Brown/whitewash
L 125 W 125 H 75

Spanish brown Emperador marble in top, legs and
apron in solid lacquered oak, full lamellas.

Assembled: No

Insert: Not available

Max length: 125 cm

FSC: FSC 100%



TARANSAY DINING TABLE

120863 Brown
L 125 W 125 H 75

Spanish brown Emperador marble in top, legs and
apron in solid lacquered oak, full lamellas.

Assembled: No

Insert: Not available

Max length: 125 cm

FSC: FSC 100%



TYLER DINING TABLE

119700 Oak
L 180 W 90 H 74

Solid oak throughout the product. Top in finger
jointed solid European oak, legs and frame in solid
oak (full lengths). Oiled version.

Assembled: No

Insert: Possible to buy 2, 119701

Max length: 280 cm

FSC: FSC 100%



TYLER DINING TABLE

119702 Whitewash
L 180 W 90 H 74

Solid oak throughout the product. Top in finger
jointed solid European oak, legs and frame in solid
oak (full lengths). White pigmented oil version.

Assembled: No

Insert: Possible to buy 2, 119703

Max length: 280 cm

FSC: FSC 100%



TYLER DINING TABLE

119712 Oak
L 170 W 105 H 74

Solid oak throughout the product. Top in finger
jointed solid European oak, legs and frame in solid
oak (full lengths). Oiled version.

Assembled: No

Insert: Included 1, possible to buy 1, 119713

Max length: 250 cm

FSC: FSC 100%



TYLER DINING TABLE

119714 Whitewash
L 170 W 105 H 74

Solid oak throughout the product. Top in finger
jointed solid European oak, legs and frame in solid
oak (full lengths). White pigmented oil version.

Assembled: No

Insert: Included 1, possible to buy 1, 119715

Max length: 250 cm

FSC: FSC 100%



TYLER DINING TABLE

121205 Brown
L 170 W 105 H 74

Solid oak throughout the product. Top in finger jointed solid European oak, legs and frame in solid oak (full lengths). Brown pigmented RUBIO oil.
Insert: Included 1, possible to buy 1, 121206
Max length: 250 cm
FSC: FSC 100%



TYLER DINING TABLE

121207 Brown
L 120 W 120 H 74

Solid oak throughout the product. Top in finger jointed solid European oak, legs and frame in solid oak (full lengths). Brown pigmented RUBIO oil.
Insert: Included 1, possible to buy 1, 121208
Max length: 210 cm
FSC: FSC 100%



WESTVILLE DINING TABLE

120716 Whitewash
L 240 W 95 H 75

Solid oak, and oak veneer in legs and frame parts, particle board with oak veneer in top, with solid oak edges.
Assembled: No
Insert: Possible to buy 2, 120717
Max length: 330 cm



WESTVILLE DINING TABLE

120718 Brown
L 240 W 95 H 75

Solid oak, and oak veneer in legs and frame parts, particle board with oak veneer in top, with solid oak edges.
Assembled: No
Insert: Possible to buy 2, 120719
Max length: 330 cm



WINNIPEG DINING TABLE

119840 Whitewash/black
L 200 W 100 H 75

Wild oak veneer on particle board. Edges in thick veneer in solid look. Reinforcement beams in solid birch. Powder coated metal legs in sand structure.
Assembled: No
Insert: Possible to buy 2, 119841
Max length: 300 cm



WINNIPEG DINING TABLE

119842 Black
L 200 W 100 H 75

Oak veneer on particle board. Edges in thick veneer in solid look. Reinforcement beams in solid birch. Powder coated metal legs in sand structure.
Assembled: No
Insert: Possible to buy 2, 119841
Max length: 300 cm



YUMI DINING TABLE

116927 Black
L 190 W 90 H 75

Black lacquered top in ash veneered MDF, legs in black lacquered solid rubberwood.
Assembled: No
Insert: Possible to buy 2, 116928
Max length: 280 cm



YUMI DINING TABLE

119200 Oak
L 190 W 90 H 75

Top in MDF with oak veneer, legs in solid oak, lacquered surface.
Assembled: No
Insert: Possible to buy 2, 119201
Max length: 280 cm



YUMI DINING TABLE

119220 Whitewash
L 190 W 90 H 75

Top in MDF with oak veneer, legs in solid oak, lacquered white washed surface.
Assembled: No
Insert: Possible to buy 2, 119221
Max length: 280 cm



YUMI DINING TABLE

119210 Brown
L 190 W 90 H 75

Top in MDF with oak veneer, legs and apron in solid oak.
Assembled: No
Insert: Possible to buy 2, 119211
Max length: 280 cm



YUMI DINING TABLE

52212 Black
L 115 W 115 H 75

Black lacquered top in ash veneered MDF, legs in black lacquered solid rubberwood.
Assembled: No
Insert: Not available
Max length: 115 cm



YUMI DINING TABLE

119203 Oak
L 115 W 115 H 75

Top in MDF with oak veneer, legs in solid oak, lacquered surface.
Assembled: No
Insert: Not available
Max length: 115 cm



YUMI DINING TABLE

119223 Whitewash
L 115 W 115 H 75

Top in MDF with oak veneer, legs in solid oak, lacquered white washed surface.
Assembled: No
Insert: Not available
Max length: 115 cm



YUMI DINING TABLE

52211 White
L 115 W 115 H 75

White lacquered top in MDF, legs in white lacquered solid rubberwood.
Assembled: No
Insert: Not available
Max length: 115 cm



YUMI DINING TABLE

119212 Brown
L 115 W 115 H 75

Top in MDF with oak veneer, legs and apron in solid oak.
Assembled: No
Insert: Not available
Max length: 115 cm



ALISON ARM CHAIR
117767 Grey/black
W 58 D 59 H 89 SH 47

Seat in polyether foam padding, upholstered in fabric, legs in powder coated metal.

Assembled: No
Fabric: 100% Polypropylene
Martindale: 25000
FSC: FSC 100%



ALISON ARM CHAIR
117768 Beige/black
W 58 D 59 H 89 SH 47

Seat in polyether foam padding, upholstered in fabric, legs in powder coated metal.

Assembled: No
Fabric: 100% Polypropylene
Martindale: 25000
FSC: FSC 100%



ALISON ARM CHAIR
117769 Dark grey/black
W 58 D 60 H 89 SH 47

Seat in polyether foam padding, upholstered in fabric, legs in powder coated metal.

Assembled: No
Fabric: 100% polyester
Martindale: 45000
FSC: FSC 100%



ALISON ARM CHAIR
117815 Light beige/black
W 58 D 59 H 89 SH 47

Seat in polyether foam padding, upholstered in fabric, legs in powder coated metal.

Assembled: No
Fabric: 100% Polypropylene
Martindale: 25000
FSC: FSC 100%



ALISON ARMCHAIR
117816 Dark beige/black
W 58 D 59 H 89 SH 47

Seat in polyether foam padding, upholstered in fabric, legs in powder coated metal.

Assembled: No
Fabric: 100% Polypropylene
Martindale: 25000
FSC: FSC 100%



ALISON CHAIR
117760 Grey/black
W 51 D 62 H 87 SH 47

Seat in polyether foam padding, upholstered in fabric, legs in powder coated metal.

Assembled: No
Fabric: 100% Polypropylene
Martindale: 25000



ALISON CHAIR
117761 Beige/black
W 51 D 62 H 87 SH 47

Seat in polyether foam padding, upholstered in fabric, legs in powder coated metal.

Assembled: No
Fabric: 100% Polypropylene
Martindale: 25000



ALISON CHAIR
117762 Dark grey/black
W 51 D 62 H 87 SH 47

Seat in polyether foam padding, upholstered in fabric, legs in powder coated metal.

Assembled: No
Fabric: 100% polyester
Martindale: 45000





ALISON CHAIR

117810 Light beige/black
W 51 D 62 H 87 SH 47

Seat in polyether foam padding, upholstered in fabric, legs in powder coated metal.

Assembled: No
Fabric: 100% Polypropylene
Martindale: 25000



ALISON CHAIR

117811 Dark beige/black
W 51 D 62 H 87 SH 47

Seat in polyether foam padding, upholstered in fabric, legs in powder coated metal.

Assembled: No
Fabric: 100% Polypropylene
Martindale: 25000



AMESBURY CHAIR

120992 Light beige/oak
W 49 D 58 H 84 SH 46

Seat part with core in plywood and metal frame, upholstered in polyether foam and polyester fabric. Legs in solid oak.

Assembled: No
Fabric: 100% polyester
Martindale: 100000
FSC: FSC 100%



AMESBURY CHAIR

120994 Light beige/whitewash
W 49 D 58 H 84 SH 46

Seat part with core in plywood and metal frame, upholstered in polyether foam and polyester fabric. Legs in solid oak.

Assembled: No
Fabric: 100% polyester
Martindale: 100000
FSC: FSC 100%



AMESBURY CHAIR

120996 Light beige/brown
W 49 D 58 H 84 SH 46

Seat part with core in plywood and metal frame, upholstered in polyether foam and polyester fabric. Legs in solid oak.

Assembled: No
Fabric: 100% polyester
Martindale: 100000
FSC: FSC 100%



AMI CHAIR

113018 Oak/grey
W 48 D 47 H 80 SH 47

Chair frame in lacquered solid oak, with seat in beige-grey fabric.

Assembled: No
Fabric: 100% Polypropylene
Martindale: 50000
FSC: FSC 100%



AMI CHAIR

113019 Whitewash/grey
W 48 D 47 H 80 SH 47

Chair frame in solid lacquered white washed oak, with seat in beige-grey fabric.

Assembled: No
Fabric: 100% Polypropylene
Martindale: 50000
FSC: FSC 100%



AMI CHAIR

113031 Oak/black
W 48 D 47 H 80 SH 47

Chair frame in lacquered solid oak, with seat in black faux leather.

Assembled: No
FSC: FSC 100%



AMI CHAIR

113033 Brown/beige
W 48 D 47 H 80 SH 47

Chair frame in solid lacquered brown oak, with seat in beige durable polypropylene fabric.

Assembled: No
Fabric: 100% Polypropylene
Martindale: 50000
FSC: FSC 100%



AMI CHAIR

52207 Black
W 48 D 47 H 80 SH 47

Chair frame in black lacquered solid oak, with seat in black faux leather.

Assembled: No
FSC: FSC 100%



AMI CHAIR

52209 Whitewash/black
W 48 D 47 H 80 SH 47

Chair frame in white washed lacquered solid oak, with seat in black faux leather.

Assembled: No
FSC: FSC 100%



AUBURN BAR CHAIR

117677 Black
W 45 D 50 H 89 SH 65

Black faux leather with decorative stitching. Black powder coated metal legs.

Assembled: No



AUBURN BAR CHAIR

117679 Brown/black
W 45 D 50 H 89 SH 65

Brown faux leather with decorative stitching. Black powder coated metal legs.

Assembled: No



AUBURN CHAIR

117650 Black
W 46 D 60 H 83 SH 47

Black faux leather with decorative stitching. Black powder coated metal legs.

Assembled: No



AUBURN CHAIR

117656 Brown/black
W 46 D 60 H 83 SH 47

Brown faux leather with decorative stitching. Black powder coated metal legs.

Assembled: No



AUSTIN BAR STOOL

103510 Oak
W 35 D 35 H 65 SH 65

Solid oak with round seat.

Assembled: No



AUSTIN BAR STOOL
103511 Black
W 35 D 35 H 65 SH 65
Solid oak with round seat.

Assembled: No



AUSTIN BAR STOOL
103512 Whitewash
W 35 D 35 H 65 SH 65
Solid oak with round seat.

Assembled: No



BOLTON ARM CHAIR
119933 Green/black
W 56 D 60 H 82 SH 45
Upholstered fabric arm chair, with frame in metal and plywood, with powder coated metal.

Assembled: No
Fabric: 100% Polypropylene
Martindale: 25000
FSC: FSC 100%



BOLTON ARM CHAIR
119934 Grey/black
W 56 D 60 H 82 SH 45
Upholstered fabric arm chair, with frame in metal and plywood, with powder coated metal.

Assembled: No
Fabric: 100% Polypropylene
Martindale: 25000
FSC: FSC 100%



BRENT CHAIR
118982 Black
W 47 D 57 H 82 SH 48
Powder coated metal frame in sand structure, back panel in plywood with ash veneer. Seat in plywood with faux leather.

Assembled: No



BRYAN BAR CHAIR
117715 Black
W 47 D 53 H 94 SH 65
Seat and back in plywood, upholstered in velvet fabric. Leg frame in powder coated metal.

Assembled: No
Fabric: 100% polyester
Martindale: 100000
FSC: FSC 100%



CANWOOD LOUNGE CHAIR
120556 Whitewash/black
W 70 D 78 H 80 SH 42
Solid European oak in the whole frame. Braided seat bands in cotton..

Assembled: Yes
FSC: FSC 100%



CANWOOD LOUNGE CHAIR
120557 Brown/black
W 70 D 78 H 80 SH 42
Solid European oak in the whole frame. Braided seat bands in cotton.

Assembled: Yes
FSC: FSC 100%



CARMEN BAR CHAIR
106261 Black
W 55 D 55 H 96 SH 65
Solid rubberwood (Hevea) in seat, legs, and backrest parts.

Assembled: No



CARMEN BAR CHAIR
106262 Whitewash
W 55 D 55 H 96 SH 65
Solid rubberwood (Hevea) in seat, legs and backrest parts.

Assembled: No



CARMEN CHAIR
106230 White
W 55 D 52 H 76 SH 45
Lacquered solid rubberwood.

Assembled: No



CARMEN CHAIR
106231 Black
W 55 D 52 H 76 SH 45
Lacquered solid rubberwood.

Assembled: No



CARMEN CHAIR
106232 Whitewash
W 55 D 52 H 76 SH 45
Stained and lacquered solid rubberwood.

Assembled: No



CARMEN CHAIR
106234 Brown
W 55 D 52 H 76 SH 45
Brown-stained, lacquered solid rubberwood.

Assembled: No



CARMEN KITCHEN SOFA
106251 Black
W 134 D 52 H 76 SH 45
Lacquered solid rubberwood.

Assembled: No



DRIMSDALE ARM CHAIR
120800 Green/oak
W 59 D 59 H 81 SH 47
Chair seat in bend-shaped plywood, upholstered in polyether foam, and fabric. Solid oak legs.

Assembled: No
Fabric: 100% polyester
Martindale: 85000
FSC: FSC 100%



DRIMSDALE ARM CHAIR

120801 Green/whitewash
W 59 D 59 H 81 SH 47

Chair seat in bend-shaped plywood, upholstered in polyether foam, and fabric. Solid oak legs.

Assembled: No
Fabric: 100% polyester
Martindale: 85000
FSC: FSC 100%



DRIMSDALE ARM CHAIR

120802 Green/brown
W 59 D 59 H 81 SH 47

Chair seat in bend-shaped plywood, upholstered in polyether foam, and fabric. Solid oak legs.

Assembled: No
Fabric: 100% polyester
Martindale: 85000
FSC: FSC 100%



DRIMSDALE ARM CHAIR

120803 Green/black
W 59 D 59 H 81 SH 47

Chair seat in bend-shaped plywood, upholstered in polyether foam, and fabric. Solid oak legs.

Assembled: No
Fabric: 100% polyester
Martindale: 85000
FSC: FSC 100%



DRIMSDALE ARM CHAIR

120804 Beige/oak
W 59 D 59 H 81 SH 47

Chair seat in bend-shaped plywood, upholstered in polyether foam, and fabric. Solid oak legs.

Assembled: No
Fabric: 100% polyester
Martindale: 85000
FSC: FSC 100%



DRIMSDALE ARM CHAIR

120805 Beige/whitewash
W 59 D 59 H 81 SH 47

Chair seat in bend-shaped plywood, upholstered in polyether foam, and fabric. Solid oak legs.

Assembled: No
Fabric: 100% polyester
Martindale: 85000
FSC: FSC 100%



DRIMSDALE ARM CHAIR

120806 Beige/brown
W 59 D 59 H 81 SH 47

Chair seat in bend-shaped plywood, upholstered in polyether foam, and fabric. Solid oak legs.

Assembled: No
Fabric: 100% polyester
Martindale: 85000
FSC: FSC 100%



DRIMSDALE ARM CHAIR

120807 Beige/black
W 59 D 59 H 81 SH 47

Chair seat in bend-shaped plywood, upholstered in polyether foam, and fabric. Solid oak legs.

Assembled: No
Fabric: 100% polyester
Martindale: 85000
FSC: FSC 100%



DRIMSDALE ARM CHAIR

120808 Grey/oak
W 59 D 59 H 81 SH 47

Chair seat in bend-shaped plywood, upholstered in polyether foam, and fabric. Solid oak legs.

Assembled: No
Fabric: 100% polyester
Martindale: 85000
FSC: FSC 100%



DRIMSDALE ARM CHAIR

120809 Grey/whitewash
W 59 D 59 H 81 SH 47

Chair seat in bend-shaped plywood, upholstered in polyether foam, and fabric. Solid oak legs.

Assembled: No
Fabric: 100% polyester
Martindale: 85000
FSC: FSC 100%



DRIMSDALE ARM CHAIR

120810 Grey/brown
W 59 D 59 H 81 SH 47

Chair seat in bend-shaped plywood, upholstered in polyether foam, and fabric. Solid oak legs.

Assembled: No
Fabric: 100% polyester
Martindale: 85000
FSC: FSC 100%



DRIMSDALE ARM CHAIR

120811 Grey/black
W 59 D 59 H 81 SH 47

Chair seat in bend-shaped plywood, upholstered in polyether foam, and fabric. Solid oak legs.

Assembled: No
Fabric: 100% polyester
Martindale: 85000
FSC: FSC 100%



FILIPPA CHAIR

113781 Oak/grey
W 44 D 51 H 92 SH 48

Frame in oiled solid oak with seat in grey fabric.

Assembled: Yes
Fabric: 100% polyester
Martindale: 23000
FSC: FSC MIX



FILIPPA CHAIR

113782 Whitewash/grey
W 44 D 51 H 92 SH 48

Frame in oiled, whitewashed solid oak with seat in grey fabric.

Assembled: Yes
Fabric: 100% polyester
Martindale: 23000
FSC: FSC MIX



GILROY ARM CHAIR

120058 Beige/black
W 59 D 60 H 81 SH 47

Arm chair in plywood frame, upholstered in polyether foam with luxury velvet, tufted details. Metal legs in powder coated lacquer in sand structure.

Assembled: No
Fabric: 100% polyester
Martindale: 40000
FSC: FSC 100%



GILROY ARM CHAIR

120059 Grey/black
W 59 D 60 H 81 SH 47

Arm chair in plywood frame, upholstered in polyether foam with luxury velvet, tufted details. Metal legs in powder coated lacquer in sand structure.

Assembled: No
Fabric: 100% polyester
Martindale: 40000
FSC: FSC 100%



GRACY CHAIR

113630 Black/oak
W 48 D 50 H 89 SH 47

Seat in black laminate and legs in lacquered solid oak.

Assembled: No



GRACY CHAIR

113631 Black
W 48 D 50 H 89 SH 47

Seat in black laminate and legs in black lacquered solid oak.

Assembled: No



GRACY CHAIR

113632 Black/whitewash
W 48 D 50 H 89 SH 47

Seat in black laminate and legs in lacquered, whitewashed solid oak.

Assembled: No



GRACY CHAIR

113634 Light grey/oak
W 48 D 50 H 89 SH 47

Seat in light grey fabric and legs in lacquered solid oak.

Assembled: No
Fabric: 100% polyester
Martindale: 40000



GRACY CHAIR

113635 Light grey/black
W 48 D 50 H 89 SH 47

Seat in light grey fabric and legs in black lacquered solid oak.

Assembled: No
Fabric: 100% polyester
Martindale: 40000



GRACY CHAIR

113636 Light grey/whitewash
W 48 D 50 H 89 SH 47

Seat in light grey fabric and legs in lacquered, whitewashed solid oak.

Assembled: No
Fabric: 100% polyester
Martindale: 40000



GRACY CHAIR

113638 Dark grey/oak
W 48 D 50 H 89 SH 47

Seat in dark grey fabric and legs in lacquered solid oak.

Assembled: No
Fabric: 100% polyester
Martindale: 40000



GRACY CHAIR

113639 Dark grey/black
W 48 D 50 H 89 SH 47

Seat in dark grey fabric and legs in black lacquered solid oak.

Assembled: No
Fabric: 100% polyester
Martindale: 40000



GRACY CHAIR

113640 Dark grey/whitewash
W 48 D 50 H 89 SH 47

Seat in dark grey fabric and legs in lacquered, whitewashed solid oak.

Assembled: No
Fabric: 100% polyester
Martindale: 40000



GRACY CHAIR

113642 White/oak
W 48 D 50 H 89 SH 47

Seat in white laminate and legs in lacquered solid oak.

Assembled: No



GRACY CHAIR

113643 White/black
W 48 D 50 H 89 SH 47

Seat in white laminate and legs in black lacquered solid oak.

Assembled: No



GRACY CHAIR

113644 White/whitewash
W 48 D 50 H 89 SH 47

Seat in white laminate and legs in lacquered, whitewashed solid oak.

Assembled: No



HALEY ARM CHAIR

110480 Grey/black
W 59 D 61 H 80 SH 47

Upholstered armchair in polypropylene fabric, legs in powder coated metal.

Assembled: No
Fabric: 100% Polypropylene
Martindale: 25000



HIGHROCK CHAIR

118611 Black
W 47 D 56 H 86 SH 46

Seat in black faux leather, legs in black powder coated metal.

Assembled: No



HUNTINGBAY ARM CHAIR

118621 Brown/black
W 54 D 58 H 79 SH 45

Upholstered chair in faux leather. Frame in powder coated metal in sand structure.

Assembled: Semi assembled



HUNTINGBAY ARM CHAIR

118622 Black
W 54 D 58 H 79 SH 45

Upholstered chair in faux leather. Frame in powder coated metal in sand structure.

Assembled: Semi assembled



KATO CHAIR

113006 Whitewash/dark grey
W 46 D 56 H 83 SH 46

Frame in lacquered solid oak. Seat and back in curved plywood with fabric.

Assembled: No
Fabric: 100% polyester
Martindale: 25000
FSC: FSC 100%

**KATO CHAIR**

113015 Black/grey

W 46 D 56 H 83 SH 46

Frame in lacquered solid oak. Seat and back in curved plywood with fabric.

Assembled: No
Fabric: 100% polyester
Martindale: 25000
FSC: FSC 100%

**KATO CHAIR**

113036 Oak/dark grey

W 46 D 56 H 83 SH 46

Frame in lacquered solid oak. Seat and back in curved plywood with fabric.

Assembled: No
Fabric: 100% polyester
Martindale: 25000
FSC: FSC 100%

**KATO CHAIR**

113037 Oak/light grey

W 46 D 56 H 83 SH 46

Frame in lacquered solid oak. Seat and back in curved plywood with fabric.

Assembled: No
Fabric: 100% polyester
Martindale: 30000
FSC: FSC 100%

**KATO CHAIR**

113038 Whitewash/light grey

W 46 D 56 H 83 SH 46

Frame in lacquered solid oak. Seat and back in curved plywood with fabric.

Assembled: No
Fabric: 100% polyester
Martindale: 30000
FSC: FSC 100%

**KATO CHAIR**

113040 Brown/beige

W 46 D 56 H 83 SH 46

Frame in lacquered solid brown oak. Seat and back in curved plywood with durable beige polypropylene fabric.

Assembled: No
Fabric: 100% Polypropylene
Martindale: 50000
FSC: FSC 100%

**LOTTA CHAIR**

110651 White

W 43 D 50 H 92 SH 45

Lacquered solid rubberwood.

Assembled: No

**LOTTA CHAIR**

110652 Black

W 43 D 50 H 92 SH 45

Lacquered solid rubberwood.

Assembled: No

**LOTTA CHAIR**

110655 Whitewash

W 43 D 50 H 92 SH 45

Lacquered solid rubberwood.

Assembled: No

**LOWELL ARM CHAIR**

120209 Grey/black

W 59 D 58 H 86 SH 47

Upholstered arm chair with fabric on plywood frame, legs in powder coated metal with sand structure. Feet in plastic.

Assembled: No
Fabric: 100% Polypropylene
Martindale: 25000

**LOWELL ARM CHAIR**

120211 Grey/black

W 59 D 62 H 86 SH 47

Upholstered arm chair with fabric on plywood frame, legs in powder coated metal with sand structure. Feet in rubber.

Assembled: No
Fabric: 100% Polypropylene
Martindale: 25000

**LOWELL ARM CHAIR**

120257 Brown/black

W 59 D 58 H 86 SH 47

Upholstered arm chair with genuine leather on plywood frame, legs in powder coated metal with sand structure. Feet in plastic.

Assembled: No

**LOWELL ARM CHAIR**

120259 Brown/black

W 59 D 50 H 86 SH 47

Upholstered arm chair with genuine leather on plywood frame, legs in powder coated metal with sand structure. Feet in rubber.

Assembled: No

**LOWELL ARM CHAIR**

120261 Black

W 59 D 58 H 86 SH 47

Upholstered arm chair with genuine leather on plywood frame, legs in powder coated metal with sand structure. Feet in plastic.

Assembled: No

**LOWELL ARM CHAIR**

120263 Black

W 59 D 62 H 86 SH 47

Upholstered arm chair with genuine leather on plywood frame, legs in powder coated metal with sand structure. Feet in rubber.

Assembled: No

**LOWELL CHAIR**

120201 Grey/black

W 46 D 58 H 86 SH 47

Upholstered chair with fabric on plywood frame, legs in powder coated metal with sand structure. Feet in plastic.

Assembled: No
Fabric: 100% Polypropylene
Martindale: 25000

**LOWELL CHAIR**

120203 Grey/black

W 46 D 62 H 86 SH 47

Upholstered chair with fabric on plywood frame, legs in powder coated metal with sand structure. Feet in rubber.

Assembled: No
Fabric: 100% Polypropylene
Martindale: 25000



LOWELL CHAIR
120249 Brown/black
W 46 D 58 H 86 SH 47

Upholstered chair with genuine leather on plywood frame, legs in powder coated metal with sand structure. Feet in plastic.

Assembled: No



LOWELL CHAIR
120251 Brown/black
W 46 D 62 H 86 SH 47

Upholstered chair with genuine leather on plywood frame, legs in powder coated metal with sand structure. Feet in rubber.

Assembled: No



LOWELL CHAIR
120253 Black
W 46 D 58 H 86 SH 47

Upholstered chair with genuine leather on plywood frame, legs in powder coated metal with sand structure. Feet in plastic.

Assembled: No



LOWELL CHAIR
120255 Black
W 46 D 62 H 86 SH 47

Upholstered chair with genuine leather on plywood frame, legs in powder coated metal with sand structure. Feet in rubber.

Assembled: No



MANNING BAR CHAIR
118615 Black
W 45 D 49 H 89 SH 65

Seat in black faux leather, legs in black powder coated metal.

Assembled: No



MANNING BAR CHAIR
118616 Cognac/black
W 45 D 49 H 89 SH 65

Seat in cognac-brown faux leather legs in black powder coated metal.

Assembled: No



MANNING CHAIR
118612 Black
W 48 D 55 H 79 SH 47

Seat in black faux leather, legs in black powder coated metal.

Assembled: No



MANNING CHAIR
118613 Cognac/black
W 48 D 55 H 79 SH 47

Seat in cognac-brown faux leather legs in black powder coated metal.

Assembled: No



MELFORT BENCH
119748 Oak
W 144 D 38 H 45 SH 45

Top in 25mm MDF with brushed wild oak veneer, solid oak in edges. Apron and legs in solid birch with wild oak veneer.

Assembled: No



NAGANO CHAIR
119429 Brown/beige
W 50 D 51 H 85 SH 46

Solid oak in frame and legs. Plywood in seat and back panel. Oak veneer on backpanels front and back. Beige polypropylene fabric.

Assembled: No
Fabric: 100% Polypropylene
Martindale: 50000
FSC: FSC 100%



NAGANO CHAIR
119430 Oak/light grey
W 50 D 51 H 85 SH 46

Solid oak in frame and legs. Plywood in seat and back panel. Light grey fabric.

Assembled: No
Fabric: 100% polyester
Martindale: 30000
FSC: FSC 100%



NAGANO CHAIR
119431 Whitewash/light grey
W 50 D 51 H 85 SH 46

Solid oak in frame and legs. Plywood in seat and back panel. Light grey fabric.

Assembled: No
Fabric: 100% polyester
Martindale: 30000
FSC: FSC 100%



NAGANO CHAIR
119432 Black/dark grey
W 50 D 51 H 85 SH 46

Solid oak in frame and legs. Plywood in seat and back panel. Dark grey fabric.

Assembled: No
Fabric: 100% polyester
Martindale: 30000
FSC: FSC 100%



NAGANO LOUNGE CHAIR
119436 Oak/light grey
W 57 D 62 H 70 SH 40

Solid oak in frame and legs. Plywood in seat and back panel. Light grey fabric.

Assembled: No
Fabric: 100% polyester
Martindale: 30000



NORWELL ARM CHAIR
110530 Grey/black
W 60 D 58 H 83 SH 46

Upholstered chair in fabric, seat in bended plywood. Legs in powder coated metal, in sand-structure. Swivel function 360 degree.

Assembled: No
Fabric: 100% polyester
Martindale: 45000
FSC: FSC 100%



NORWELL ARM CHAIR
110531 Beige/black
W 60 D 58 H 83 SH 46

Upholstered chair in fabric, seat in bended plywood. Legs in powder coated metal, in sand-structure. Swivel function 360 degree.

Assembled: No
Fabric: 100% polyester
Martindale: 45000
FSC: FSC 100%

**PAISLEY CHAIR**120697 Beige/black
W 49 D 53 H 82 SH 49

Frame and legs in powder coated metal, in sand structure. Seat and backrest in plywood, upholstered in polyether foam and fabric.

Assembled: No
Fabric: 100% RPET
Martindale: 100000
FSC: FSC 100%**PAISLEY CHAIR**120698 Grey brown/black
W 49 D 53 H 82 SH 49

Frame and legs in powder coated metal, in sand structure. Seat and backrest in plywood, upholstered in polyether foam and fabric.

Assembled: No
Fabric: 100% RPET
Martindale: 100000
FSC: FSC 100%**PRESCOTT LOUNGE CHAIR**120112 Grey/black
W 67 D 75 H 75 SH 41

Upholstered seat and backrest, in luxury velvet. Frame and legs in powder coated metal with sand-structure, and arm rests in solid. Adjustable feet.

Assembled: Yes
Fabric: 100% polyester
Martindale: 88000**PRESCOTT LOUNGE CHAIR**120115 Green/black
W 67 D 75 H 75 SH 41

Upholstered seat and backrest, with luxury velvet. Frame and legs in powder coated metal, with sand-structure, armrests in solid oak. Adjustable feet.

Assembled: Yes
Fabric: 100% polyester
Martindale: 88000**PRESTWICK ARM CHAIR**120541 Whitewash/beige
W 60 D 63 H 88 SH 47

Solid full lamella oak in frame and legs, braided natural rattan in backrest, and durable polypropylene fabric in the seat.

Assembled: No
Fabric: 100% Polypropylene
Martindale: 50000
FSC: FSC 100%**PRESTWICK ARM CHAIR**120542 Brown/beige
W 60 D 63 H 88 SH 47

Solid full lamella oak in frame and legs, braided natural rattan in backrest, and durable polypropylene fabric in the seat.

Assembled: No
Fabric: 100% Polypropylene
Martindale: 50000
FSC: FSC 100%**REILY ARM CHAIR**110456 Grey/black
W 55 D 61 H 86 SH 46

Upholstered seat in velvet fabric. Seat frame in metal, legs in powder coated metal.

Assembled: No
Fabric: 100% polyester
Martindale: 100000**REILY ARM CHAIR**110457 Dark grey/black
W 55 D 61 H 86 SH 46

Seat in upholstered micro fibre fabric. Seat frame in metal, legs in powder coated metal.

Assembled: No
Fabric: 100% polyester
Martindale: 45000**REILY ARM CHAIR**110458 Grey/black
W 55 D 61 H 86 SH 46

Upholstered seat in fabric. Seat frame in metal, legs in powder coated metal.

Assembled: No
Fabric: 100% Polypropylene
Martindale: 25000**REILY ARM CHAIR**110459 Beige/black
W 55 D 61 H 86 SH 46

Upholstered seat in fabric. Seat frame in metal, legs in powder coated metal.

Assembled: No
Fabric: 100% Polypropylene
Martindale: 25000**RODHAM CHAIR**120065 Oak/light grey
W 44 D 51 H 82 SH 46

Solid oak in frame and backrest. Seat in plywood with polyester fabric.

Assembled: No
Fabric: 100% polyester
Martindale: 30000
FSC: FSC 100%**RODHAM CHAIR**120066 Whitewash/light grey
W 44 D 51 H 82 SH 46

Solid oak in the whole frame and backrest, seat in plywood with polyester fabric.

Assembled: No
Fabric: 100% polyester
Martindale: 30000
FSC: FSC 100%**RODHAM CHAIR**120067 Brown/beige
W 44 D 51 H 82 SH 46

Solid oak in frame and back panel. Seat in plywood with polyester fabric.

Assembled: No
Fabric: 100% Polypropylene
Martindale: 50000
FSC: FSC 100%**RODHAM CHAIR**120068 Black/dark grey
W 44 D 51 H 82 SH 46

Solid oak in frame, and backrest. Seat in plywood with polyester fabric.

Assembled: No
Fabric: 100% polyester
Martindale: 30000**ROSELAWN SOFA CHAIR**120196 Beige
W 77 D 84 H 81

Upholstered lounge chair in fabric. Frame in metal and plywood, polyether foam. Legs in metal with swivelfunction.

Assembled: Yes
Fabric: 100% polyester
Martindale: 30000**ROSSPORT CHAIR**120081 Green/black
W 52 D 58 H 83 SH 47

Upholstered chair in velvet fabric, seat in bended plywood. Legs in powder coated metal in sand structure. Swivel with 180 degree return function.

Assembled: No
Fabric: 100% polyester
Martindale: 40000
FSC: FSC 100%



ROSSPORT CHAIR
120084 Grey/black
W 52 D 58 H 83 SH 47

Upholstered chair in fabric, seat in bended plywood.
Legs in powder coated metal, in sand structure.
Swivel with 180 degree return function.

Assembled: No
Fabric: 100% polyester
Martindale: 45000
FSC: FSC 100%



ROSSPORT CHAIR
120085 Beige/black
W 52 D 58 H 83 SH 47

Upholstered chair in fabric, seat in bended plywood.
Legs in powder coated metal, in sand structure.
Swivel with 180 degree return function.

Assembled: No
Fabric: 100% polyester
Martindale: 45000
FSC: FSC 100%



SIERRA BAR CHAIR
110476 Dark grey/black
W 46 D 55 H 97 SH 67

Upholstered chair in micro fibre fabric, metal legs in black powder coating.

Assembled: No
Fabric: 100% polyester
Martindale: 45000
FSC: FSC 100%



SIERRA BAR CHAIR
110477 Beige/black
W 46 D 55 H 97 SH 67

Upholstered chair in velvet fabric, metal legs in black powder coating.

Assembled: No
Fabric: 100% polyester
Martindale: 100000
FSC: FSC 100%



SIERRA BAR CHAIR
110478 Grey/black
W 46 D 55 H 97 SH 67

Upholstered chair in fabric, metal legs in black powder coating.

Assembled: No
Fabric: 100% polyester
Martindale: 45000
FSC: FSC 100%



SIERRA BAR CHAIR
110479 Beige/black
W 46 D 55 H 97 SH 67

Frame in metal, with FSC-certified plywood. Seat in bouclé fabric, legs in black powder coated metal.

Assembled: No
Fabric: 90% Polyester, 10% Acrylic
Martindale: 30000
FSC: FSC 100%



SIERRA CHAIR
110384 Beige/black
W 49 D 55 H 85 SH 47

Upholstered chair in micro fibre fabric, metal legs in black powder coating.

Assembled: No
Fabric: 100% polyester
Martindale: 45000



SIERRA CHAIR
110385 Dark grey/black
W 49 D 55 H 85 SH 47

Upholstered chair in micro fibre fabric, metal legs in black powder coating.

Assembled: No
Fabric: 100% polyester
Martindale: 45000



SIERRA CHAIR
110387 Grey/black
W 49 D 55 H 85 SH 47

Upholstered chair in velvet fabric with high wear level, metal legs in black powder coating.

Assembled: No
Fabric: 100% polyester
Martindale: 100000



SIERRA CHAIR
110390 Blue/black
W 49 D 55 H 85 SH 47

Upholstered chair in velvet fabric with high wear level, metal legs in black powder coating.

Assembled: No
Fabric: 100% polyester
Martindale: 100000



SIERRA CHAIR
110391 Beige/black
W 49 D 55 H 85 SH 47

Upholstered chair in velvet fabric with high wear level, metal legs in black powder coating.

Assembled: No
Fabric: 100% polyester
Martindale: 100000



SIERRA CHAIR
110397 Green/black
W 49 D 55 H 85 SH 47

Upholstered chair in velvet fabric with high wear level, metal legs in black powder coating.

Assembled: No
Fabric: 100% polyester
Martindale: 100000



SIERRA CHAIR
110467 Black
W 49 D 55 H 85 SH 47

Upholstered chair in velvet fabric with high wear level, metal legs in black powder coating.

Assembled: No
Fabric: 100% polyester
Martindale: 100000



SIERRA CHAIR
110486 Grey/black
W 49 D 55 H 85 SH 47

Upholstered chair in fabric, metal legs in black powder coating.

Assembled: No
Fabric: 100% polyester
Martindale: 45000
FSC: FSC 100%



SIERRA CHAIR
110487 Beige/black
W 49 D 55 H 85 SH 47

Upholstered chair in fabric, metal legs in black powder coating.

Assembled: No
Fabric: 100% polyester
Martindale: 45000
FSC: FSC 100%



SIERRA CHAIR
110489 Green/black
W 49 D 55 H 85 SH 47

Upholstered chair in fabric, metal legs in black powder coating.

Assembled: No
Fabric: 100% polyester
Martindale: 45000
FSC: FSC 100%



SIERRA CHAIR
110492 Beige/black
W 49 D 55 H 85 SH 47

Frame in metal, with FSC-certified plywood. Seat in bouclé fabric, legs in black powder coated metal.

Assembled: No
Fabric: 90% Polyester, 10% Acrylic
Martindale: 30000
FSC: FSC 100%



WATERTON ARM CHAIR
120752 Oak/beige
W 55 D 61 H 80 SH 45

Solid oak in full lamellas, back rest in curved plywood with oak veneer. Seat in durable polypropylene fabric.

Assembled: No
Fabric: 100% Polypropylene
Martindale: 50000
FSC: FSC 100%



WATERTON ARM CHAIR
120753 Whitewash/brown
W 55 D 61 H 80 SH 45

Solid oak in full lamellas, back rest in curved plywood with oak veneer. Seat in durable polypropylene fabric.

Assembled: No
Fabric: 100% Polypropylene
Martindale: 50000
FSC: FSC 100%



WINDHAM ARM CHAIR
120660 Green/oak
W 57 D 62 H 80 SH 48

Chair seat in bend-shaped plywood, upholstered in polyether foam, and fabric. Solid oak legs.

Assembled: No
Fabric: 100% polyester
Martindale: 85000
FSC: FSC 100%



WINDHAM ARM CHAIR
120661 Green/whitewash
W 57 D 62 H 80 SH 48

Chair seat in bend-shaped plywood, upholstered in polyether foam, and fabric. Solid oak legs.

Assembled: No
Fabric: 100% polyester
Martindale: 85000
FSC: FSC 100%



WINDHAM ARM CHAIR
120662 Green/brown
W 57 D 62 H 80 SH 48

Chair seat in bend-shaped plywood, upholstered in polyether foam, and fabric. Solid oak legs.

Assembled: No
Fabric: 100% polyester
Martindale: 85000
FSC: FSC 100%



WINDHAM ARM CHAIR
120663 Green/black
W 57 D 62 H 80 SH 48

Chair seat in bend-shaped plywood, upholstered in polyether foam, and fabric. Solid oak legs.

Assembled: No
Fabric: 100% polyester
Martindale: 85000
FSC: FSC 100%



WINDHAM ARM CHAIR
120664 Beige/oak
W 57 D 62 H 80 SH 48

Chair seat in bend-shaped plywood, upholstered in polyether foam, and fabric. Solid oak legs.

Assembled: No
Fabric: 100% polyester
Martindale: 85000
FSC: FSC 100%



WINDHAM ARM CHAIR
120665 Beige/whitewash
W 57 D 62 H 80 SH 48

Chair seat in bend-shaped plywood, upholstered in polyether foam, and fabric. Solid oak legs.

Assembled: No
Fabric: 100% polyester
Martindale: 85000
FSC: FSC 100%



WINDHAM ARM CHAIR
120666 Beige/brown
W 57 D 62 H 80 SH 48

Chair seat in bend-shaped plywood, upholstered in polyether foam, and fabric. Solid oak legs.

Assembled: No
Fabric: 100% polyester
Martindale: 85000
FSC: FSC 100%



WINDHAM ARM CHAIR
120667 Beige/black
W 57 D 62 H 80 SH 48

Chair seat in bend-shaped plywood, upholstered in polyether foam, and fabric. Solid oak legs.

Assembled: No
Fabric: 100% polyester
Martindale: 85000
FSC: FSC 100%



WOLCOTT CHAIR
120940 Oak/brown
W 45 D 49 H 84 SH 47

Solid oak in legs and frame. Birch-plywood with oak veneer in backpanel and seat panel. Seat upholstered with polyether foam and Bull leather-textile.

Assembled: No
Fabric: Polyether foam and Bull leather-textile
Martindale: 32000
FSC: FSC 100%



WOLCOTT CHAIR
120941 Whitewash/brown
W 45 D 49 H 84 SH 47

Solid oak in legs and frame. Birch-plywood with oak veneer in backpanel and seat panel. Seat upholstered with polyether foam and Bull leather-textile.

Assembled: No
Fabric: Polyether foam and Bull leather-textile
Martindale: 32000
FSC: FSC 100%



YUMI BENCH
119224 Whitewash
W 155 D 40 H 45 SH 45

Seat in MDF with oak veneer, legs in solid oak, lacquered white washed surface.

Assembled: No



BREWERTON SIDEBORD

120700 Oak/black
W 160 D 40 H 74

Wild oak veneer on MDF. Solid oak in details. Legs in powder coated metal, in sand structure.

Assembled: No
Push open: Yes



BREWERTON TV UNIT

120702 Oak/black
W 160 D 40 H 56

Wild oak veneer on MDF. Solid oak in details. Legs in powder coated metal, in sand structure.

Assembled: No
Push open: Yes



BROOKLYN CABINET

108545 Dark brown
W 130 D 45 H 150

Lacquered, finger jointed solid oak with brushed dark brown finish.

Assembled: Semi assembled
Soft close: Yes
FSC: FSC 100%



BROOKLYN CABINET

108565 Whitewash
W 130 D 45 H 150

Oiled, finger jointed solid oak with white wash finish.

Assembled: Semi assembled
Soft close: Yes
FSC: FSC 100%



BROOKLYN CABINET

108596 Oak
W 130 D 45 H 150

Lacquered, finger jointed solid oak with brushed finish.

Assembled: Semi assembled
Soft close: Yes
FSC: FSC 100%



BROOKLYN SIDEBORD

108544 Dark brown
W 160 D 45 H 80

Lacquered, finger jointed solid oak with brushed dark brown finish.

Assembled: Semi assembled
Soft close: Yes
FSC: FSC 100%



BROOKLYN SIDEBORD

108564 Whitewash
W 160 D 45 H 80

Oiled, finger jointed solid oak with white wash finish.

Assembled: Semi assembled
Soft close: Yes
FSC: FSC 100%



BROOKLYN SIDEBORD

108595 Oak
W 160 D 45 H 80

Lacquered, finger jointed solid oak with brushed finish.

Assembled: Semi assembled
Soft close: Yes
FSC: FSC 100%



BROOKLYN TV UNIT

108584 Dark brown
W 160 D 45 H 60

Lacquered, finger jointed solid oak with brushed dark brown finish.

Assembled: Semi assembled
Soft close: Yes
Holes for cables: 1
FSC: FSC 100%



BROOKLYN TV UNIT

108585 Whitewash
W 160 D 45 H 60

Oiled, finger jointed solid oak with white wash finish.

Assembled: Semi assembled
Soft close: Yes
Holes for cables: 1
FSC: FSC 100%



BROOKLYN TV UNIT

108597 Oak
W 160 D 45 H 60

Lacquered, finger jointed solid oak with brushed finish.

Assembled: Semi assembled
Soft close: Yes
Holes for cables: 1
FSC: FSC 100%



CLEARBROOK CABINET

119783 Brown/black
W 79 D 42 H 125

Oak veneer on MDF-board, solid oak edges, and strips on front. Lacquered surface. Legs in powder coated metal.

Assembled: Semi assembled
Soft close: Yes



CLEARBROOK SIDEBORD

119782 Brown/black
W 160 D 42 H 75

Oak veneer on particle board, solid oak edges, and strips on front. Lacquered surface. Legs in powder coated metal.

Assembled: Semi assembled
Soft close: Yes



CONFETTI CONSOLE TABLE

103781 Oak
W 100 D 40 H 74

Veneered, oiled solid oak. Metal details.

Assembled: No



CONFETTI CONSOLE TABLE

103782 White
W 100 D 40 H 74

Solid birch and white lacquered MDF. Metal details.

Assembled: No



CONFETTI CONSOLE TABLE

103783 Black
W 100 D 40 H 74

Veneered, black lacquered solid oak. Metal details.

Assembled: No



CONFETTI CONSOLE TABLE

103784 Whitewash
W 100 D 40 H 74

Veneered, lacquered, whitewashed solid oak. Metal details.

Assembled: No



EVERETT CABINET

118769 Whitewash/black
W 95 D 41 H 105

Solid oak, full lamellas. Steel brushed surface, white wash finish with lacquer. Legs in black powder coated metal in sand structure.

Assembled: Semi assembled

Soft close: Yes

FSC: FSC 100%



EVERETT CABINET

118770 Whitewash/black
W 95 D 41 H 125

Solid oak, full lamellas. Steel brushed surface, white wash finish with lacquer. Legs in black powder coated metal in sand structure.

Assembled: Semi assembled

Soft close: Yes

FSC: FSC 100%



EVERETT CABINET

118771 Whitewash/black
W 95 D 41 H 105

Solid oak, full lamellas. Steel brushed surface, white wash finish with lacquer. Legs in black powder coated metal in sand structure.

Assembled: Semi assembled

Soft close: Yes

FSC: FSC 100%



EVERETT CABINET

118772 Whitewash/black
W 95 D 41 H 125

Solid oak, full lamellas. Steel brushed surface, white wash finish with lacquer. Legs in black powder coated metal in sand structure.

Assembled: Semi assembled

Soft close: Yes

FSC: FSC 100%



EVERETT CABINET

118784 Black
W 95 D 41 H 105

Solid oak, full lamellas. Steel brushed surface, black lacquered finish. Legs in black powder coated metal in sand structure.

Assembled: Semi assembled

Soft close: Yes

FSC: FSC 100%



EVERETT CABINET

118785 Black
W 95 D 41 H 125

Solid oak, full lamellas. Steel brushed surface, black lacquered finish. Legs in black powder coated metal in sand structure.

Assembled: Semi assembled

Soft close: Yes

FSC: FSC 100%



EVERETT CABINET

118786 Black
W 95 D 41 H 105

Solid oak, full lamellas. Steel brushed surface, black lacquered finish. Legs in black powder coated metal in sand structure.

Assembled: Semi assembled

Soft close: Yes

FSC: FSC 100%



EVERETT CABINET

118787 Black
W 95 D 41 H 125

Solid oak, full lamellas. Steel brushed surface, black lacquered finish. Legs in black powder coated metal in sand structure.

Assembled: Semi assembled

Soft close: Yes

FSC: FSC 100%



EVERETT GLASS CABINET

118773 Whitewash/black
W 95 D 41 H 195

Solid oak, full lamellas. Steel brushed surface, white wash finish with lacquer. Legs in black powder coated metal in sand structure.

Assembled: Semi assembled

Soft close: Yes

FSC: FSC 100%



EVERETT GLASS CABINET

118788 Black
W 95 D 41 H 195

Solid oak, full lamellas. Steel brushed surface, black lacquered finish. Legs in black powder coated metal in sand structure.

Assembled: Semi assembled

Soft close: Yes

FSC: FSC 100%



EVERETT GLASS CABINET

118794 Brown/black
W 95 D 41 H 195

Solid oak, full lamellas. Brushed surface, brown pigmented RUBIO oil. Legs in black powder coated metal in sandstructure. Assembled.

Assembled: Semi assembled

Soft close: Yes

FSC: FSC 100%



EVERETT SIDEBOARD

118768 Whitewash/black
W 160 D 41 H 75

Solid oak, full lamellas. Steel brushed surface, white wash finish with lacquer. Legs in black powder coated metal in sand structure.

Assembled: Semi assembled

Soft close: Yes

FSC: FSC 100%



EVERETT SIDEBOARD

118783 Black
W 160 D 41 H 75

Solid oak, full lamellas. Steel brushed surface, black lacquered finish. Legs in black powder coated metal in sand structure.

Assembled: Semi assembled

Soft close: Yes

FSC: FSC 100%



EVERETT SIDEBOARD

118792 Brown/black
W 160 D 41 H 75

Solid oak, full lamellas. Brushed surface, brown pigmented RUBIO oil. Legs in black powder coated metal in sandstructure. Assembled.

Assembled: Semi assembled

Soft close: Yes

FSC: FSC 100%



FENWOOD SIDEBOARD

118602 Black
W 160 D 42 H 79

Ash veneer on MDF, apron, legs and details in solid rubberwood, black lacquered. Some internal panels in black Melamine. Gold colored metal feet.

Assembled: Semi assembled

Soft close: Yes



FILIPPA GLASS CABINET

113778 Oak
W 81 D 40 H 140

Top in finger-jointed, oiled solid oak, frame in oiled oak veneer on chip board, and legs in oiled solid oak. Tempered glass.

Assembled: Semi assembled
Soft close: Yes



FILIPPA GLASS CABINET

113787 Whitewash
W 81 D 40 H 140

Top and frame in lacquered oak-veneered MDF, and legs in lacquered solid oak. Tempered glass.

Assembled: Semi assembled
Soft close: Yes



FILIPPA GLASS CABINET

113788 Whitewash
W 82 L 40 H 185

Top and frame in lacquered oak-veneered MDF and legs in lacquered solid oak. Tempered glass.

Assembled: Semi assembled
Soft close: Yes



FILIPPA GLASS CABINET

117943 Brown
W 82 L 40 H 185

Top and frame in lacquered oak-veneered MDF and legs in lacquered solid oak. Tempered glass.

Assembled: Semi assembled
Soft close: Yes



FILIPPA SIDEBOARD

113736 Oak
W 122 L 40 H 85

Top in finger jointed, oiled solid oak, chipboard frame with oiled oak veneer and legs in oiled solid oak.

Assembled: Semi assembled
Soft close: Yes



FILIPPA SIDEBOARD

113738 Whitewash
W 122 L 40 H 85

Top and frame in lacquered oak-veneered MDF and legs in lacquered solid oak.

Assembled: Semi assembled
Soft close: Yes



FILIPPA SIDEBOARD

117941 Brown
W 122 L 40 H 85

Particleboard/MDF with oak veneer in flat panels, solid oak in apron, legs and handles. Lacquered.

Assembled: Semi assembled
Soft close: Yes



FILIPPA SIDEBOARD

113776 Oak
W 150 L 40 H 85

Top in finger jointed, oiled solid oak, chipboard frame with oiled oak veneer and legs in oiled solid oak.

Assembled: Semi assembled
Soft close: Yes



FILIPPA SIDEBOARD

113786 Whitewash
W 150 L 40 H 85

Top and frame in lacquered oak-veneered MDF and legs in lacquered solid oak.

Assembled: Semi assembled
Soft close: Yes



FILIPPA SIDEBOARD

117942 Brown
W 150 L 40 H 85

Particleboard/MDF with oak veneer in flat panels, solid oak in apron, legs and handles. Lacquered.

Assembled: Semi assembled
Soft close: Yes



FRED SIDEBOARD

117421 Whitewash/black
W 170 L 42 H 79

Solid finger jointed oak in white wash lacquer. Steel brushed surface on top. Legs in black powder coated metal.

Assembled: Semi assembled
Soft close: Yes
FSC: FSC 100%



FRED SIDEBOARD

117431 Dark brown/black
W 170 L 42 H 79

Solid finger jointed oak in dark brown lacquer. Steel brushed surface on top. Legs in black powder coated metal.

Assembled: Semi assembled
Soft close: Yes
FSC: FSC 100%



HADDINGTON CABINET

120133 Whitewash/black
W 102 L 45 H 146

MDF with oak veneer, solid oak in details like the stripes in doors. Powder coated metal base in sandstructure.

Assembled: No



HADDINGTON CONSOLE TABLE

120134 Whitewash/black
W 142 L 47 H 77

MDF with oak veneer, solid oak in details like the stripes on drawers. Powder coated metal base in sandstructure.

Assembled: No



HADDINGTON SIDEBOARD

120132 Whitewash/black
W 142 L 45 H 71

MDF with oak veneer, solid oak in details like the stripes in doors. Powder coated metal base in sandstructure.

Assembled: No



HALIFAX CABINET

119908 Black
W 100 L 40 H 140

Oak veneer on MDF. Solid oak strips on front. Legs in powder coated metal in sand structure. Knobs in gold finished brushed metal.

Assembled: Semi assembled
Soft close: Yes



HALIFAX SIDEBOARD

119906 Black
W 160 L 40 H 75

Oak veneer on MDF. Solid oak strips on front. Legs in powder coated metal in sand structure. Knobs in gold finished brushed metal.

Assembled: Semi assembled
Soft close: Yes



HALIFAX WRITING DESK

119910 Black
W 120 L 61 H 82

Oak veneer on MDF. Solid oak strips on front. Legs in powder coated metal in sand structure. Knobs in gold finished brushed metal.

Assembled: No



HALIFAX CABINET

119917 Brown/black
W 100 L 40 H 140

Oak veneer on MDF. Solid oak strips on front. Legs in powder coated metal in sand structure. Knobs in gold finished brushed metal.

Assembled: Semi assembled
Soft close: Yes



HALIFAX SIDEBOARD

119916 Brown/black
W 160 L 40 H 75

Oak veneer on MDF. Solid oak strips on front. Legs in powder coated metal in sand structure. Knobs in gold finished brushed metal.

Assembled: Semi assembled
Soft close: Yes



HAZLETON GLASS CABINET

121152 Oak
W 100 L 40 H 203

Solid oak in legs, particle board with oak veneer on all flat panels. Treated with RUBIO oil.

Assembled: No
FSC: FSC 100%



HAZLETON GLASS CABINET

121156 Brown
W 100 L 40 H 203

Solid oak in legs, particle board with oak veneer on all flat panels. Treated with RUBIO oil.

Assembled: No
FSC: FSC 100%



HAZLETON SIDEBOARD

121150 Oak
W 170 L 40 H 75

Solid oak in legs, particle board with oak veneer on all flat panels. Treated with RUBIO oil.

Assembled: Semi assembled
FSC: FSC 100%



HAZLETON SIDEBOARD

121154 Brown
W 170 L 40 H 75

Solid oak in legs, particle board with oak veneer on all flat panels. Treated with RUBIO oil.

Assembled: Semi assembled
FSC: FSC 100%



HOLTON BOOK SHELF

120004 Black
W 140 L 36 H 166

Solid turned oak in frame. Shelves and back panels in particle board with oak veneer.

Assembled: No



HOLTON BOOK SHELF

120014 Oak
W 140 L 36 H 166

Solid turned oak in frames. Shelves and back panels in particle board with oak veneer.

Assembled: No



HOLTON CONSOLE TABLE

120002 Black
W 160 L 36 H 81

Solid turned oak in frame. Shelves and back panels in particle board with oak veneer.

Assembled: No



HOLTON CONSOLE TABLE

120012 Oak
W 140 L 36 H 81

Solid turned oak in frames. Shelves and back panels in particle board with oak veneer.

Assembled: No



MARSHALLE GLASS CABINET

119080 Black
W 85 L 36 H 160

Solid rubberwood (Hevea), MDF in top, bottom and back. Shelves in MDF with solid rubberwood frame all around. Tempered glass. Legs in powder coated metal.

Assembled: Semi assembled



MARSHALLE GLASS CABINET

119085 Whitewash/black
W 85 L 36 H 160

Solid rubberwood (Hevea), MDF with poplar veneer in top, bottom, backpanel and shelves. Shelves with solid rubberwood frame around.

Assembled: Semi assembled



MARSHALLE SIDEBOARD

119081 Black
W 160 L 36 H 88

Solid rubberwood (Hevea), MDF in top, bottom and back. Shelves in MDF with solid rubberwood frame all around. Tempered glass. Legs in powder coated metal.

Assembled: Semi assembled



MARSHALLE SIDEBOARD

119086 Whitewash/black
W 160 L 36 H 88

Solid rubberwood (Hevea), MDF with poplar veneer in top, bottom, backpanel and shelves. Shelves with solid rubberwood frame all around.

Assembled: Semi assembled



MELVILLE SIDEBOARD

119372 Whitewash/black
W 160 L 45 H 73

Wild oak veneer on particle board, solid oak edges.
Lacquered surface. Legs in powder coated metal.

Assembled: Semi assembled
Push open: Yes



MELVILLE SIDEBOARD

119376 Brown/black
W 160 L 45 H 73

Wild oak veneer on particle board, solid oak edges.
Lacquered surface. Legs in powder coated metal.

Assembled: Semi assembled
Push open: Yes



MORESBY SIDEBOARD

120600 Whitewash
W 160 L 40 H 75

Oak veneer on MDF, solid oak in details of doors,
and in apron and legs.

Assembled: No
Soft close: Yes



MORESBY TV UNIT

120601 Whitewash
W 135 L 40 H 55

Oak veneer on MDF, solid oak in details of doors,
and in apron and legs.

Assembled: No
Soft close: Yes
Holes for cables: 3



ORWEL CONSOLE TABLE

120910 Beige/brown
W 140 L 40 H 75

Solid genuine Italian Travertine stone in top, legs
and frame in solid oak, shelves in MDF with oak
veneer.

Assembled: No
FSC: FSC MIX



ORWEL CONSOLE TABLE

120911 Beige/brown
W 140 L 40 H 45

Solid genuine Italian Travertine stone in top, legs
and frame in solid oak, shelf in MDF with oak
veneer.

Assembled: No
FSC: FSC MIX



ORWEL CONSOLE TABLE

120900 Beige/whitewash
W 140 L 40 H 75

Solid genuine Italian Travertine stone in top, legs
and frame in solid oak, shelves in MDF with oak
veneer.

Assembled: No
FSC: FSC MIX



ORWEL CONSOLE TABLE

120901 Beige/whitewash
W 140 L 40 H 45

Solid genuine Italian Travertine stone in top, legs
and frame in solid oak, shelf in MDF with oak
veneer.

Assembled: No
FSC: FSC MIX

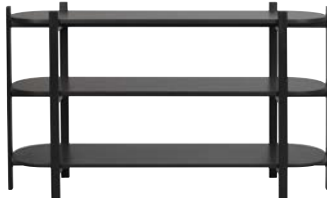


SPRINGDALE WRITING DESK

119734 Black
W 140 L 55 H 80

Top and apron in MDF with lacquered ash veneer.
Legs in powder coated metal in sand structure.

Assembled: No



TOLSONA CONSOLE TABLE

118652 Black
W 144 L 39 H 85

Solid oak in legs and aprons. MDF with oak veneer
in shelves.

Assembled: No
FSC: FSC MIX



YUMI CONSOLE TABLE

119229 Whitewash
W 120 L 40 H 75

Top in MDF with oak veneer, legs in solid oak,
lacquered white washed surface.

Assembled: No



YUMI SIDEBOARD

116905 Oak
W 152 L 42 H 84

Legs and rounded details in solid oak, the rest in oak
veneer. Lacquered surface.

Assembled: Semi assembled
Soft close: Yes



YUMI SIDEBOARD

52497 Whitewash
W 152 L 42 H 84

Legs and rounded details in solid oak, flat panels
in MDF with oak veneer, lacquered white washed
surface.

Assembled: Semi assembled
Soft close: Yes



YUMI TV UNIT

116909 Oak
W 152 L 42 H 60

Legs and rounded details in solid oak, the rest in oak
veneer. Lacquered surface.

Assembled: Semi assembled
Soft close: Yes
Holes for cables: 1



YUMI TV UNIT

52501 Whitewash
W 152 L 42 H 60

Legs and rounded details in solid oak, flat panels
in MDF with oak veneer, lacquered white washed
surface.

Assembled: Semi assembled
Soft close: Yes
Holes for cables: 1



HAMMOND SOFA

120560 Grey/whitewash
W 212 D 92 H 81 SH 41

Solid beech frame, steel sprung seat. Reversible cushions, sponge (cold foam) core draped with Dacron fibre padding. Solid oak in legs. Backrest cushions are turnable. 3 seater sofa.

Assembled: Semi assembled
Fabric: 70% Polyester, 30% Acrylic
Martindale: 50000
FSC: FSC MIX
Accessories: 120616 Grey cushion, 2-pack
65 16 32



HAMMOND SOFA

20562 Beige/whitewash
W 212 D 92 H 81 SH 41

Solid beech frame, steel sprung seat. Reversible cushions, sponge (cold foam) core draped with Dacron fibre padding. Solid oak in legs. Backrest cushions are turnable. 3 seater sofa.

Assembled: Semi assembled
Fabric: 70% Polyester, 30% Acrylic
Martindale: 50000
FSC: FSC MIX
Accessories: 120618 Beige cushion, 2-pack
B 65 D 16 H 32



HAMMOND SOFA

120564 Grey/black
W 212 D 92 H 81 SH 41

Solid beech frame, steel sprung seat. Reversible cushions, sponge (cold foam) core draped with Dacron fibre padding. Solid oak in legs. Backrest cushions are turnable. 3 seater sofa.

Assembled: Semi assembled
Fabric: 70% Polyester, 30% Acrylic
Martindale: 50000
FSC: FSC MIX
Accessories: 120616 Grey cushion, 2-pack
B 65 D 16 H 32



HAMMOND SOFA

120566 Beige/black
W 212 D 92 H 81 SH 41

Solid beech frame, steel sprung seat. Reversible cushions, sponge (cold foam) core draped with Dacron fibre padding. Solid oak in legs. Backrest cushions are turnable. 3 seater sofa.

Assembled: Semi assembled
Fabric: 70% Polyester, 30% Acrylic
Martindale: 50000
FSC: FSC MIX
Accessories: 120618 Beige cushion, 2-pack
B 65 D 16 H 32



HAMMOND SOFA

120567 Beige/brown
W 212 D 92 H 81 SH 41

Solid beech frame, steel sprung seat. Reversible cushions, sponge (cold foam) core draped with Dacron fibre padding. Solid oak in legs. Backrest cushions are turnable. 3 seater sofa.

Assembled: Semi assembled
Fabric: 70% Polyester, 30% Acrylic
Martindale: 50000
FSC: FSC MIX
Accessories: 120618 Beige cushion, 2-pack
B 65 D 16 H 32



HAMMOND SOFA

120569 Grey/brown
W 212 D 92 H 81 SH 41

Solid beech frame, steel sprung seat. Reversible cushions, sponge (cold foam) core draped with Dacron fibre padding. Solid oak in legs. Backrest cushions are turnable. 3 seater sofa.

Assembled: Semi assembled
Fabric: 70% Polyester, 30% Acrylic
Martindale: 50000
FSC: FSC MIX
Accessories: 120616 Grey cushion, 2-pack
B 65 D 16 H 32



SHELTON SOFA

120386 Grey/black
W 218 D 91 H 70 SH 42

Solid beech frame, steel sprung seat, down pillows, solid ash/oak in visible lower frame. Legs in powder coated metal in sand structure. 3 seater sofa.

Assembled: Semi assembled
Fabric: 97% Polyester, 3% Linen
Martindale: 100000
FSC: FSC MIX



ROSELAWN SOFA CHAIR

120196 Beige
W 77 D 84 H 81

Upholstered lounge chair in fabric. Frame in metal and plywood, polyether foam. Legs in metal with swivelfunction.

Assembled: Yes
Fabric: 100% polyester
Martindale: 30000



RAWLINS SOFA

122842 Beige
W 226 D 116 H 85 SH 45

Frame in plywood and chipboard and Pirelli-bands in seat. The frame is covered with polyether foam and fiber wadding. Cushions in cold foam wrapped with fiber wadding and fabric. 3 seater sofa in two different sizes.

Assembled: Semi assembled
Fabric: : 97% Polyester, 3% Linen
Martindale: 100000
FSC: FSC MIX

MORE COLOURS



RAWLINS SOFA

122642 Beige
W 259 D 116 H 85 SH 45

Frame in plywood and chipboard and Pirelli-bands in seat. The frame is covered with polyether foam and fiber wadding. Cushions in cold foam wrapped with fiber wadding and fabric. 3 seater sofa in two different sizes.

Assembled: Semi assembled
Fabric: : 97% Polyester, 3% Linen
Martindale: 100000
FSC: FSC MIX



RAWLINS FOOT STOOL

122643 Beige
W 91 D 91 H 45 SH 45

Frame in plywood and chipboard and Pirelli-bands in seat. The frame is covered with polyether foam and fiber wadding. Cushion in cold foam wrapped with fiber wadding and fabric.

Assembled: Yes
Fabric: 100% polyester
Martindale: 100000
FSC: FSC 100%

MODULAR SOFAS



DUNCAN 3 SEATER SOFA

122030 Light grey
W 258 D 103 H 56 SH 41

Frame in plywood and particle board, seat in zig-zag springs (Nozag). Frame upholstered with polyether foam, synthetic batting and fabric. Seat in High Resilience foam (cold foam), synthetic batting, and fabric. Back cushions in loose shredded foam mixed with polyester fibre balls, with fabric. Feet in black plastic H 50mm.

Assembled: Semi assembled
Fabric: 100% polyester
Martindale: 100000
FSC: FSC 100%



DUNCAN 3 SEATER SOFA

122033 Light grey
W 258 D 150 H 56 SH 41

Frame in plywood and particle board, seat in zig-zag springs (Nozag). Frame upholstered with polyether foam, synthetic batting and fabric. Seat in High Resilience foam (cold foam), synthetic batting, and fabric. Back cushions in loose shredded foam mixed with polyester fibre balls, with fabric. Feet in black plastic H 50mm.

Assembled: Semi assembled
Fabric: 100% polyester
Martindale: 100000
FSC: FSC 100%



DUNCAN 3 SEATER SOFA

122036 Light grey
W 258 D 150 H 56 SH 41

Frame in plywood and particle board, seat in zig-zag springs (Nozag). Frame upholstered with polyether foam, synthetic batting and fabric. Seat in High Resilience foam (cold foam), synthetic batting, and fabric. Back cushions in loose shredded foam mixed with polyester fibre balls, with fabric. Feet in black plastic H 50mm.

Assembled: Semi assembled
Fabric: 100% polyester
Martindale: 100000
FSC: FSC 100%



DUNCAN CHAISE LONGUE

122020 Light grey
W 129 D 150 H 56 SH 41

Frame in plywood and particle board, seat in zig-zag springs (Nozag). Frame upholstered with polyether foam, synthetic batting and fabric. Seat in High Resilience foam (cold foam), synthetic batting, and fabric. Back cushions in loose shredded foam mixed with polyester fibre balls, with fabric. Feet in black plastic H 50mm.

Assembled: Yes
Fabric: 100% polyester
Martindale: 100000
FSC: FSC 100%



DUNCAN CHAISE LONGUE

122021 Light grey
W 129 D 150 H 56 SH 41

Frame in plywood and particle board, seat in zig-zag springs (Nozag). Frame upholstered with polyether foam, synthetic batting and fabric. Seat in High Resilience foam (cold foam), synthetic batting, and fabric. Back cushions in loose shredded foam mixed with polyester fibre balls, with fabric. Feet in black plastic H 50mm.

Assembled: Yes
Fabric: 100% polyester
Martindale: 100000
FSC: FSC 100%



DUNCAN LOUNGE CHAIR

122019 Light grey
W 112 D 103 H 56 SH 41

Frame in plywood and particle board, seat in zig-zag springs (Nozag). Frame upholstered with polyether foam, synthetic batting and fabric. Seat in High Resilience foam (cold foam), synthetic batting, and fabric. Back cushions in loose shredded foam mixed with polyester fibre balls, with fabric. Feet in black plastic H 50mm.

Assembled: Yes
Fabric: 100% polyester
Martindale: 100000
FSC: FSC 100%



DUNCAN FOOT STOOL

122018 Light grey
W 112 D 103 H 41 SH 41

Frame in plywood and particle board, seat in zig-zag springs (Nozag). Frame upholstered with polyether foam, synthetic batting and fabric. Seat in High Resilience foam (cold foam), synthetic batting, and fabric. Back cushions in loose shredded foam mixed with polyester fibre balls, with fabric. Feet in black plastic H 50mm.

Assembled: Yes
Fabric: 100% polyester
Martindale: 100000
FSC: FSC 100%



WILLARD 3 SEATER SOFA

121310 Beige
121330 Light Beige
W 236 D 98 H 70 SH 41

Frame in plywood and particle board, seat in zig-zag springs (Nozag). Frame upholstered with polyether foam, synthetic batting and fabric. Seat and backrest in High Resilience foam (cold foam), synthetic batting, and fabric. Feet in black plastic H 60mm.

Assembled: Semi assembled
Fabric: 100% polyester
Martindale: 30000
FSC: FSC 100%



WILLARD 4 SEATER SOFA

121311 Beige
121331 Light Beige
W 314 D 98 H 70 SH 41

Frame in plywood and particle board, seat in zig-zag springs (Nozag). Frame upholstered with polyether foam, synthetic batting and fabric. Seat and backrest in High Resilience foam (cold foam), synthetic batting, and fabric. Feet in black plastic H 60mm.

Assembled: Semi assembled
Fabric: 100% polyester
Martindale: 30000
FSC: FSC 100%



WILLARD 3 SEATER SOFA

121313 Beige
121333 Light Beige
W 234 D 161 H 70 SH 41

Frame in plywood and particle board, seat in zig-zag springs (Nozag). Frame upholstered with polyether foam, synthetic batting and fabric. Seat and backrest in High Resilience foam (cold foam), synthetic batting, and fabric. Feet in black plastic H 60mm.

Assembled: Semi assembled
Fabric: 100% polyester
Martindale: 30000
FSC: FSC 100%



WILLARD 4 SEATER SOFA

121314 Beige
121334 Light Beige
W 312 D 161 H 70 SH 41

Frame in plywood and particle board, seat in zig-zag springs (Nozag). Frame upholstered with polyether foam, synthetic batting and fabric. Seat and backrest in High Resilience foam (cold foam), synthetic batting, and fabric. Feet in black plastic H 60mm.

Assembled: Semi assembled
Fabric: 100% polyester
Martindale: 30000
FSC: FSC 100%



WILLARD 3 SEATER SOFA

121316 Beige
121336 Light Beige
W 234 D 161 H 70 SH 41

Frame in plywood and particle board, seat in zig-zag springs (Nozag). Frame upholstered with polyether foam, synthetic batting and fabric. Seat and backrest in High Resilience foam (cold foam), synthetic batting, and fabric. Feet in black plastic H 60mm.

Assembled: Semi assembled
Fabric: 100% polyester
Martindale: 30000
FSC: FSC 100%



WILLARD 4 SEATER SOFA

121317 Beige
121337 Light Beige
W 312 D 161 H 70 SH 41

Frame in plywood and particle board, seat in zig-zag springs (Nozag). Frame upholstered with polyether foam, synthetic batting and fabric. Seat and backrest in High Resilience foam (cold foam), synthetic batting, and fabric. Feet in black plastic H 60mm.

Assembled: Semi assembled
Fabric: 100% polyester
Martindale: 30000
FSC: FSC 100%



BOXFORD COFFEE TABLE

121018 Brown
L 110 W 110 H 40

Top in particle board with oak veneer, legs in solid birch with oak veneer.

Assembled: No



BOXFORD COFFEE TABLE

121019 Black
L 110 W 110 H 40

Top in particle board with oak veneer, legs in solid birch with oak veneer.

Assembled: No



BROOKSVILLE COFFEE TABLE

120784 Brown/whitewash
L 90 W 90 H 42

Top in real marble (brown Emperor), position blocks in MDF, legs in MDF with oak veneer, lacquered finish.

Assembled: No
FSC: FSC MIX



BROOKSVILLE COFFEE TABLE

120785 White/whitewash
L 90 W 90 H 42

Top in real marble (white Carrara), position blocks in MDF, legs in MDF with oak veneer, lacquered finish.

Assembled: No
FSC: FSC MIX



BROOKSVILLE COFFEE TABLE

120786 Brown
L 90 W 90 H 42

Top in real marble (brown Emperor), position blocks in MDF, legs in MDF with oak veneer, lacquered finish.

Assembled: No
FSC: FSC MIX



BROOKSVILLE COFFEE TABLE

120787 White/brown
L 90 W 90 H 42

Top in real marble (white Carrara), position blocks in MDF, legs in MDF with oak veneer, lacquered finish.

Assembled: No
FSC: FSC MIX



BROOKSVILLE COFFEE TABLE

120788 Brown/whitewash
L 90 W 90 H 42

Top in real marble (brown Emperor), position blocks in MDF, legs in MDF with oak veneer, lacquered finish.

Assembled: No
FSC: FSC MIX



BROOKSVILLE COFFEE TABLE

120789 White/whitewash
L 90 W 90 H 42

Top in real marble (white Carrara), position blocks in MDF, legs in MDF with oak veneer, lacquered finish.

Assembled: No
FSC: FSC MIX



BROOKSVILLE COFFEE TABLE

120790 Brown
L 90 W 90 H 42

Top in real marble (brown Emperor), position blocks in MDF, legs in MDF with oak veneer, lacquered finish.

Assembled: No
FSC: FSC MIX



BROOKSVILLE COFFEE TABLE

120791 White/brown
L 90 W 90 H 42

Top in real marble (white Carrara), position blocks in MDF, legs in MDF with oak veneer, lacquered finish.

Assembled: No
FSC: FSC MIX



BROOKLYN COFFEE TABLE

108313 Whitewash
L 130 W 75 H 52

Oiled, finger jointed solid oak with white wash finish.

Assembled: No
FSC: FSC 100%



BROOKLYN COFFEE TABLE

108314 Dark brown
L 130 W 75 H 52

Lacquered, finger jointed solid oak with brushed dark brown finish.

Assembled: No
FSC: FSC 100%



BROOKLYN COFFEE TABLE

108598 Oak
L 130 W 75 H 52

Lacquered, finger jointed solid oak with light brushed finish.

Assembled: No
FSC: FSC 100%



COLTON COFFEE TABLE

119896 Black
L 180 W 50 H 43

Top in MDF with ash veneer, legs in powder coated metal, in sandstructure.

Assembled: No



COLTON COFFEE TABLE

119897 Black
L 55 W 55 H 43

Top in MDF with ash veneer, legs in powder coated metal, in sandstructure.

Assembled: No



DAISY NESTING TABLES

111854 Black
L 50 W 50 H 50

Top in milled out MDF, legs in solid rubberwood. Lacquered surface.

Assembled: No



DAISY COFFEE TABLE

111834 Black
L 80 W 80 H 45

Top in milled out MDF, legs in solid rubberwood. Lacquered surface.

Assembled: No



DAISY COFFEE TABLE

111844 Black
L 55 W 55 H 35

Top in milled out MDF, legs in solid rubberwood. Lacquered surface.

Assembled: No



DEERFIELD COFFEE TABLE

121030 Whitewash/black
L 80 W 80 H 47

Thin solid oak on particle board, solid oak in borders. Lacquered whitewashed surface. Metal legs in black powder coated lacquer with sand structure.

Assembled: Yes
FSC: FSC 100%



DEERFIELD COFFEE TABLE

121031 Brown/black
L 80 W 80 H 47

Thin solid oak on particle board, solid oak in borders. Lacquered brown surface. Metal legs in black powder coated lacquer with sand structure surface.

Assembled: Yes
FSC: FSC 100%



DEERFIELD COFFEE TABLE

121034 Whitewash/black
L 70 W 70 H 40

Thin solid oak on particle board, solid oak in borders. Lacquered whitewashed surface. Metal legs in black powder coated lacquer with sand structure surface.

Assembled: Yes
FSC: FSC 100%



DEERFIELD COFFEE TABLE

121035 Brown/black
L 70 W 70 H 40

Thin solid oak on particle board, solid oak in borders. Lacquered whitewashed surface. Metal legs in black powder coated lacquer with sand structure surface.

Assembled: Yes
FSC: FSC 100%



FILIPPA COFFEE TABLE

113712 Whitewash
L 90 W 90 H 52

Finger-jointed, oiled, whitewashed solid oak.

Assembled: No
FSC: FSC 100%



FILIPPA COFFEE TABLE

113714 Whitewash
L 130 W 70 H 52

Finger-jointed, oiled, whitewashed solid oak.

Assembled: No
FSC: FSC 100%



GRAFTON COFFEE TABLE

119658 Black
L 70 W 70 H 45

Top in 24mm solid sand blasted pine, black lacquered surface. Legs in solid powder coated metal in sand structure.

Assembled: No



GRAFTON NESTING TABLES

119659 Black
L 50 W 50 H 45

Top in 24mm solid sand blasted pine, black lacquered surface. Legs in solid powder coated metal in sand structure.

Assembled: No



HAMMOND COFFEE TABLE

120570 Whitewash
L 135 W 62 H 45

Solid oak, full lamellas in top and base.

Assembled: No
FSC: FSC 100%



HAMMOND COFFEE TABLE

120572 Brown
L 135 W 62 H 45

Solid oak, full lamellas in top and base.

Assembled: No
FSC: FSC 100%



HAMMOND COFFEE TABLE

120574 Black
L 135 W 62 H 45

Solid oak, full lamellas in top and base.

Assembled: No
FSC: FSC 100%



HAMMOND COFFEE TABLE

120590 Brown/whitewash
L 135 W 62 H 45

Solid oak, full lamellas in base, genuine Emperor marble in top.

Assembled: No
FSC: FSC 100%



HAMMOND COFFEE TABLE

120591 Brown
L 135 W 62 H 45

Solid oak, full lamellas in base, genuine Emperor marble in top.

Assembled: No
FSC: FSC 100%



HAMMOND COFFEE TABLE

120592 Brown/black
L 135 W 62 H 45

Solid oak, full lamellas in base, genuine Emperor marble in top.

Assembled: No
FSC: FSC 100%



HAMMOND COFFEE TABLE

120593 White/whitewash
L 135 W 62 H 45

Solid oak, full lamellas in base, genuine Carrara marble in top.

Assembled: No
FSC: FSC 100%



HAMMOND COFFEE TABLE

120594 White/brown
L 135 W 62 H 45

Solid oak, full lamellas in base, genuine Carrara marble in top.

Assembled: No
FSC: FSC 100%



HAMMOND COFFEE TABLE

120595 White/black
L 135 W 62 H 45

Solid oak, full lamellas in base, genuine Carrara marble in top.

Assembled: No
FSC: FSC 100%



HAMMOND COFFEE TABLE

120587 Whitewash
L 62 W 62 H 45

Solid oak, full lamellas in top and base.

Assembled: No
FSC: FSC 100%



HAMMOND COFFEE TABLE

120588 Brown
L 62 W 62 H 45

Solid oak, full lamellas in top and base.

Assembled: No
FSC: FSC 100%



HAMMOND COFFEE TABLE

120589 Black
L 62 W 62 H 45

Solid oak, full lamellas in top and base.

Assembled: No
FSC: FSC 100%



HAMMOND COFFEE TABLE

120596 White/whitewash
L 62 W 62 H 45

Solid oak, full lamellas in base, genuine Carrara marble in top.

Assembled: No
FSC: FSC 100%



HAMMOND COFFEE TABLE

120597 White/brown
L 62 W 62 H 45

Solid oak, full lamellas in base, genuine Carrara marble in top.

Assembled: No
FSC: FSC 100%



HAMMOND COFFEE TABLE

120598 White/black
L 62 W 62 H 45

Solid oak, full lamellas in base, genuine Carrara marble in top.

Assembled: No
FSC: FSC 100%



HOLTON COFFEE TABLE

120368 Oak
L 87 W 87 H 46

Solid oak in legs and frame, MDF with oak veneer in top.

Assembled: No



HOLTON COFFEE TABLE

120371 Black
L 87 W 87 H 46

Solid oak in legs and frame, MDF with oak veneer in top.

Assembled: No



HOLTON COFFEE TABLE

120372 Oak
L 62 W 62 H 36

Solid oak in legs and frame, MDF with oak veneer in top.

Assembled: No



HOLTON COFFEE TABLE

120375 Black
L 62 W 62 H 36

Solid oak in legs and frame, MDF with oak veneer in top.

Assembled: No



HOLTON COFFEE TABLE

120376 Oak
L 130 W 65 H 46

Solid oak in legs and frame, MDF with oak veneer on top.

Assembled: No



HOLTON COFFEE TABLE

120379 Black
L 130 W 65 H 46

Solid oak in legs and frame, MDF with oak veneer on top.

Assembled: No



MARSDEN COFFEE TABLE

121094 Beige/whitewash
L 90 W 90 H 45

Solid lacquered oak, top in MDF with beige colored ceramic stonematerial, polished surface.

Assembled: No
FSC: FSC MIX



MARSDEN COFFEE TABLE

121095 Beige/whitewash
L 60 W 60 H 40

Solid lacquered oak, top in MDF with beige colored ceramic stonematerial, polished surface.

Assembled: No
FSC: FSC MIX



MARSDEN COFFEE TABLE

121096 Beige/brown
L 90 W 90 H 45

Solid lacquered oak, top in MDF with beige colored ceramic stonematerial, polished surface.

Assembled: No
FSC: FSC MIX



MARSDEN COFFEE TABLE

121097 Beige/brown
L 60 W 60 H 40

Solid lacquered oak, top in MDF with beige colored ceramic stonematerial, polished surface.

Assembled: No
FSC: FSC MIX



MELVILLE COFFEE TABLE

119384 Whitewash/black
L 140 W 65 H 46

Wild oak veneer on particle board, solid oak edges. Lacquered surface. Legs in powder coated metal.

Assembled: No



MELVILLE COFFEE TABLE

119386 Brown/black
L 140 W 65 H 46

Wild oak veneer on particle board, solid oak edges. Lacquered surface. Legs in powder coated metal.

Assembled: No



NESS COFFEE TABLE

120404 Whitewash
L 160 W 60 H 45

Solid European oak in the whole table. White pigmented lacquer.

Assembled: No
FSC: FSC 100%



NESS COFFEE TABLE

120405 Oak
L 160 W 60 H 45

Solid European oak in the whole table. Transparent lacquer.

Assembled: No
FSC: FSC 100%



ORWEL COFFEE TABLE

120902 Beige/whitewash
L 140 W 60 H 45

Solid genuine italian Travertine stone in top, legs and frame in solid oak, shelves in MDF with oak veneer.

Assembled: No
FSC: FSC MIX



ORWEL COFFEE TABLE

120912 Beige/brown
L 140 W 60 H 45

Solid genuine italian Travertine stone in top, legs and frame in solid oak, shelves in MDF with oak veneer.

Assembled: No
FSC: FSC MIX



SHELTON COFFEE TABLE

120394 Brown/black
L 145 W 60 H 45

Solid European Ashwood, full length lamellas, 28mm thickness. Powder coated metal in sand structure on legs. Adjustable feet

Assembled: No
FSC: FSC 100%



SHELTON COFFEE TABLE

120395 Black
L 145 W 60 H 45

Solid European Ashwood, full length lamellas, 28mm thickness. Powder coated metal in sand structure on legs. Adjustable feet.

Assembled: No
FSC: FSC 100%



SHELTON COFFEE TABLE

120397 Brown/black
L 95 W 50 H 45

Solid European Ashwood, full length lamellas, 28mm thickness. Powder coated metal in sand structure on legs. adjustable feet.

Assembled: No
FSC: FSC 100%



SHELTON COFFEE TABLE

120398 Black
L 95 W 50 H 45

Solid European Ashwood, full length lamellas, 28mm thickness. Powder coated metal in sand structure on legs. Adjustable feet.

Assembled: No
FSC: FSC 100%



SKYE COFFEE TABLE

119326 Black
L 89 W 89 H 45

Top in steel brushed oak veneer on particle board, legs in black sand structured powder coating.

Assembled: No



SKYE COFFEE TABLE

119327 Black
L 120 W 60 H 40

Top in steel brushed oak veneer on particle board, legs in black sand structured powder coating.

Assembled: No



SKYE COFFEE TABLE

119328 Black
L 80 W 40 H 45

Top in steel brushed oak veneer on particle board, legs in black sand structured powder coating.

Assembled: No



SPENCER COFFEE TABLE

119270 Black
L 120 W 60 H 45

Oak veneer on MDF, legs in powder coated metal.

Assembled: No



SPENCER COFFEE TABLE

119271 Black
L 95 W 95 H 45

Oak veneer on MDF, legs in powder coated metal.

Assembled: No



SPENCER COFFEE TABLE

119272 Black
L 90 W 90 H 45

Oak veneer on MDF, legs in powder coated metal.

Assembled: No



SULLIVAN COFFEE TABLE

120100 Whitewash
L 80 W 80 H 40

Top in MDF with oak veneer, edge in solid oak.
Center foot panels with milled grooves in solid oak.

Assembled: No



SULLIVAN COFFEE TABLE

120101 Whitewash
L 60 W 60 H 37

Top in MDF with oak veneer, edge in solid oak.
Center foot panels with milled grooves in solid oak.

Assembled: No



SULLIVAN COFFEE TABLE

120102 Black
L 80 W 80 H 40

Top in MDF with oak veneer, edge in solid oak.
Center foot panels with milled grooves in solid oak
and MDF with oak veneer.

Assembled: No



SULLIVAN COFFEE TABLE

120103 Black
L 60 W 60 H 37

Top in MDF with oak veneer, edge in solid oak.
Center foot panels with milled grooves in solid oak
and MDF with oak veneer.

Assembled: No



TARANSAY COFFEE TABLE

120844 Beige/whitewash
L 90 W 90 H 45

Solid italian Travertine stone in top, legs and frame
in solid lacquered oak, full lamellas.

Assembled: No
FSC: FSC 100%



TARANSAY COFFEE TABLE

120845 Beige/brown
L 90 W 90 H 45

Solid italian Travertine stone in top, legs and frame
in solid lacquered oak, full lamellas.

Assembled: No
FSC: FSC 100%



TARANSAY COFFEE TABLE

120847 Beige/whitewash
L 60 W 60 H 40

Solid italian Travertine stone in top, legs and frame
in solid lacquered oak, full lamellas.

Assembled: No
FSC: FSC 100%



TARANSAY COFFEE TABLE

120848 Beige/brown
L 60 W 60 H 40

Solid italian Travertine stone in top, legs and frame
in solid lacquered oak, full lamellas.

Assembled: No
FSC: FSC 100%



TRAY ARM TRAY

103708 White
103709 Black
L 46 W 32 H 1

Lacquered solid wood.

Assembled: Yes



TRAY ARM TRAY

103707 Oak
103716 Whitewash
L 46 W 32 H 1

Lacquered solid wood.

Assembled: Yes



YUMI COFFEE TABLE

119205 Oak
L 90 W 90 H 53

Top in MDF with oak veneer, legs in solid oak,
lacquered surface.

Assembled: No



YUMI COFFEE TABLE

119206 Oak
L 130 W 65 H 48

Top in MDF with oak veneer, legs in solid oak,
lacquered surface.

Assembled: No



YUMI NESTING TABLES

119208 Oak
L 50 W 50 H 45

Top in MDF with oak veneer, legs in solid oak,
lacquered surface.

Assembled: No



YUMI COFFEE TABLE
119225 Whitewash
L 90 W 90 H 53

Top in MDF with oak veneer, legs in solid oak, lacquered white washed surface.

Assembled: No



YUMI COFFEE TABLE
119226 Whitewash
L 130 W 65 H 48

Top in MDF with oak veneer, legs in solid oak, lacquered white washed surface.

Assembled: No



YUMI NESTING TABLES
119228 Whitewash
L 50 W 50 H 45

Top in MDF with oak veneer, legs in solid oak, lacquered white washed surface.

Assembled: No



YUMI COFFEE TABLE
52291 Black
L 130 W 65 H 48

Black lacquered top in ash veneered MDF, legs in black lacquered solid rubberwood.

Assembled: No



YUMI COFFEE TABLE
52421 Black
L 90 W 90 H 53

Black lacquered top in ash veneered MDF, legs in black lacquered solid rubberwood.

Assembled: No



YUMI NESTING TABLES
52220 Black
L 50 W 50 H 45

Black lacquered top in ash veneered MDF, legs in black lacquered solid rubberwood.

Assembled: No



YUMI COFFEE TABLE
116968 Brown
L 130 W 65 H 48

Brown lacquered top in ash veneered MDF, legs in brown lacquered solid rubberwood.

Assembled: No



YUMI COFFEE TABLE
116967 Brown
L 90 W 90 H 53

Brown lacquered top in ash veneered MDF, legs in brown lacquered solid rubberwood.

Assembled: No



YUMI NESTING TABLES
116969 Brown
L 50 W 50 H 45

Brown lacquered top in ash veneered MDF, legs in brown lacquered solid rubberwood.

Assembled: No

The MILFORD hall collection creates an exclusive feeling for the hallway, at the same time as it is timeless and lasts for many years.

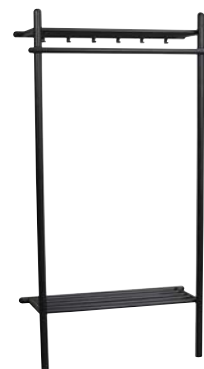
MILFORD is made of solid lacquered oak and has metal hooks on the hat rack, clothes hanger and hanger. The parts are available in black lacquered oak, whitewash and lacquered oak.

Thanks to the straight end of the shoe stand, it is possible to mount several shoe stands on top of each other and create a double hat rack.



MILFORD HAT RACK

119501 Oak/black
119521 Whitewash/black
119541 Black
L 80 W 33 H 19



MILFORD CLOTHES HANGER

119505 Oak/black
119525 Whitewash/black
119545 Black
L 91 W 39 H 180



MILFORD HOOK LIST

119502 Oak
119522 Whitewash
119542 Oak/black
L 80 W 7 H 3



MILFORD SHOE STAND

119500 Oak
119520 Whitewash
119540 Black
L 80 W 33 H 19



MILFORD HANGER

119507 Oak/black
119527 Whitewash/black
119547 Black
L 45 W 3 H 18



MILFORD MIRROR

119503 Oak
119523 Whitewash
119543 Black
L 52 W 12 H 74



MILFORD MIRROR

119504 Oak
119524 Whitewash
119544 Black
L 52 W 5 H 180



MILFORD WALL KNOB, 12 CM

119509 Oak
119529 Whitewash
119549 Black
L 12 W 4 H 12



MILFORD WALL KNOB, 8 CM

119508 Oak
119548 Black
L 8 W 4 H 8



MILFORD BENCH

119506 Oak/grey
119526 Whitewash/grey
119546 Black/grey
L 80 W 40 H 46

Create a modern feeling for your hallway with the collection HILLMOND. The simplicity in the design will mean you never tire of the collection.

HILLMOND consists of solid oak veneer on MDF in lacquered natural oak and whitewash.



HILLMOND HAT RACK
121050 Whitewash
121060 Oak
L 80 W 28 H 20



HILLMOND SHOE STAND
121061 Oak
121051 Whitewash
L 80 W 37 H 40



HILLMOND BENCH
121052 Whitewash/beige
121062 Oak/beige
L 80 W 40 H 46
(Mounted)



HILLMOND SHELF/BEDSIDE TABLE
121055 Whitewash
121065 Oak
L 40 W 27 H 36



HILLMOND CLOTHES HANGER
121068 Oak
121058 Whitewash
L 65 W 7 H 14



HILLMOND MIRROR
121066 Oak
121056 Whitewash
L 40 W 10 H 60



HILLMOND MIRROR
121057 Whitewash
121067 Oak
L 40 W 10 H 150



The popular hall collection CONFETTI creates a classic feeling for the hallway. It is a timeless series that will last for many years to come.

CONFETTI consists of lacquered parts in four colours.



CONFETTI HAT RACK
103600 Oak
103601 White
103602 Black
103603 Whitewash
L 80 W 30 H 17



CONFETTI HAT RACK
103610 Oak
103611 White
103612 Black
103731 Whitewash
L 100 W 30 H 26



CONFETTI KEY CABINET
103637 Oak
103638 White
103639 Black
103736 Whitewash
L 18 W 7 H 90



CONFETTI SHOE STAND
103613 Oak
103614 White
103615 Black
103732 Whitewash
L 80 W 30 H 40



CONFETTI SHOE STAND
1 103628 Metal/oak
103629 Metal/white
103630 Metal/black
103733 Metal/whitewash
L 100 W 30 H 40



CONFETTI HANGER
103697 Oak
103698 White
103699 Black
103752 Whitewash
L 44 W 2 H 16



CONFETTI HANGER
103634 Oak
103635 White
103636 Black
103735 Whitewash
L 59 W 59 H 178



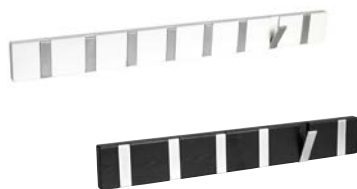
CONFETTI BENCH, 2 drawers
103753 Oak/black or 103754 Oak/light grey
103755 White/black or 103756 White/light grey
103757 Oak/black or 103758 Black/light grey
103759 Whitewash/black or
103760 Whitewash/light grey
L 70 W 35 H 45
(Mounted)



CONFETTI BENCH, 3 drawers
103761 Oak/black or 103762 Oak/light grey
103763 White/black or 103764 White/light grey
103765 Black/black all. 103766 Black/light grey
103767 Whitewash/black or
103768 Whitewash/light grey
L 106 W 35 H 45
(Mounted)



CONFETTI BENCH/SHOE STAND
103821 Oak/dark grey
103822 Whitewash/dark grey
103823 Black/dark grey
L 80 W 30 H 52



CONFETTI CLOTHES HANGER, 6 HOOKS
103670 Oak
103671 White
103672 Black
103744 Whitewash
L 50 W 2 H 7



CONFETTI MIRROR, 150 CM
103667 Oak
103668 White
103669 Black
103743 Whitewash
L 60 W 3 H 150



CONFETTI MIRROR, 90 CM
103664 Oak
103665 White
103666 Black
103742 Whitewash
L 60 W 3 H 90



CONFETTI CONSOLE TABLE
103781 Oak
103782 White
103783 Black
103784 Whitewash
L 100 W 40 H 74

The INVERNESS hall collection consists of seven practical parts.

A modern collection in solid brown lacquered oak. The brass coloured details have rounded shapes and are placed on selected parts to create a timeless design. On the mirror and clothes hanger you can choose between hooks in brass colour or oak.



INVERNESS HAT RACK
120732 Brown
L 45 W 32 H 32
Solid oak, brass coloured metal, brushed finish.



INVERNESS HAT RACK
120730 Brown
L 80 W 32 H 28
Solid oak, brass coloured metal, brushed finish.



INVERNESS MIRROR
120734 Brown
L 45 W 10 H 60
Solid oak, MDF, mirror glass. Hooks in brushed brass coloured metal or oak hooks.



INVERNESS CLOTHES HANGER
120736 Brown
L 65 W 6 H 5
Solid oak, hooks in brushed brass coloured metal or oak hooks.



INVERNESS SHOE STAND
120731 Brown
L 80 W 32 H 28
Solid oak.



INVERNESS BENCH/ SHOE STAND
120733 Brown/beige
L 75 W 40 H 55
Solid oak, OEKO-tex fabric in Polypropylene.



INVERNESS HANGER
120737 Brown
L 44 W 1 H 18
Solid oak, brass coloured metal.

The MALONE collection is made of black powder coated metal with a sand structure. Several of the parts have metal buds in brushed gold colour. On the clothes hanger and the high mirror, you choose where you put your knobs thanks to the flexibility of the perforated plate.



MALONE CLOTHES HANGER
119963 Black/gold
L 80 W 2 H 12
Powder coated metal with sand structure, plate thickness 1mm. Metal knobs in brushed gold color.



MALONE MIRROR
119964 Black/gold
L 50 W 12 H 80
Powder coated metal with sand structure. Profile 15x15mm, plate thickness 1mm. Metal knobs in brushed gold color.



MALONE MIRROR
119965 Black/gold
L 53 W 2 H 170
Powder coated metal with sand structure. Profile 15x15mm, plate thickness 1mm. Metal knobs in brushed gold color.



MALONE HAT RACK
119961 Black/gold
L 80 W 32 H 17
Powder coated metal with sand structure. Profile 15x15mm, plate thickness 1mm. Metal knobs in brushed gold color.

PRODUCT GALLERY - BEDSIDE TABLE & HEADBOARDS

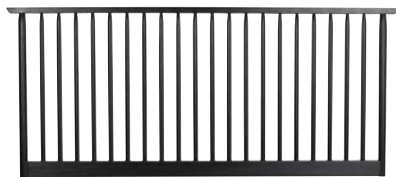


RIGGINS HEADBOARD

120438 Whitewash
W 194 D 6 H 125-149

Solid oak. Fits 180 cm wide bed. Hidden adjustable metal legs, for support, in powder coated finish.

Assembled: Semi assembled



RIGGINS HEADBOARD

120439 Black
W 194 D 6 H 125-149

Solid oak. Fits 180 cm wide bed. Hidden adjustable metal legs, for support, in powder coated finish.

Assembled: Semi assembled



CAMROSE BEDSIDE TABLE

120436 Whitewash
L 40 W 40 H 35

MDF top with oak veneer. Solid oak in console/frame.

Assembled: No



CAMROSE BEDSIDE TABLE

120437 Black
L 40 W 40 H 35

MDF top with oak veneer. Solid oak in console/frame.

Assembled: No



REDMOND HEADBOARD

119786 Brown
W 234 D 32 H 126-150

MDF with oak veneer, solid oak mouldings. Fits 180 cm wide bed. Concealed adjustable metal legs, for support, in powder coating. Plus hidden wooden bracket for wall mounting.

Assembled: Semi assembled



WHITMORE BEDSIDE TABLE

120766 Oak
L 28 W 25 H 24

Oak veneer on MDF. Front of drawer in solid oak, inner drawer in hardwood, drawer sliders in metal and top in white marble.

Assembled: Yes



WHITMORE BEDSIDE TABLE

120768 Whitewash
L 28 W 25 H 24

Oak veneer on MDF. Front of drawer in solid oak, inner drawer in hardwood, drawer sliders in metal and top in white marble.

Assembled: Yes



WHITMORE HEADBOARD

120767 Whitewash
W 240 D 28 H 79 114-139

Headboard in wildoak veneer on MDF with solid oak edges. Bedside tables in oak veneer on MDF. Front of drawer in solid oak, inner drawer in hardwood, drawer sliders in metal and top in white marble. Adjustable legs in metal.

Assembled: No



WHITMORE HEADBOARD

120765 Oak
W 240 D 28 H 79 114-139

Headboard in wildoak veneer on MDF with solid oak edges. Bedside tables in oak veneer on MDF. Front of drawer in solid oak, inner drawer in hardwood, drawer sliders in metal and top in white marble. Adjustable legs in metal.

Assembled: No

PRODUCT GALLERY - CARPETS



AUCKLAND CARPET

120450 Grey
120451 Nature
L 290 W 200

High quality hand woven carpet in 100% wool.



AUCKLAND CARPET

120454 Grey
120455 Nature
L 340 W 240

High quality hand woven carpet in 100% wool.



AUCKLAND CARPET

120456 Grey
120457 Nature
L 400 W 300

High quality hand woven carpet in 100% wool.



AUCKLAND CARPET

120452 Grey
120453 Nature
W 250

High quality hand woven carpet in 100% wool.



Feel free to take a photo of our
furniture in your home and post it on
your Instagram account and tag us
with @rowicohome.

For more inspiration, visit our website
www.rowicohome.com or our
showroom in Stockholm;
Birger Jarlsgatan 32



@rowicohome

